

Southampton Common Survey 2017



Published: 13th December 2017

Southampton Common Forum

Dedication

This report is dedicated to the people and organisations of Southampton who very generously gave their time and attention to contributing to the success of this survey.

“The measure of any great civilisation is its cities and a measure of a city’s greatness is to be found in the quality of its public spaces its parks and squares.”

John Ruskin



This work is licensed under the Creative Commons Attribution-Non-commercial 4.0 International License. To view a copy of this license, visit <http://creativecommons.org/licenses/by-nc/4.0/>.

CONTENTS

1	Executive Summary.....	4
2	Background	5
2.1	Southampton Common's History.....	5
2.2	Previous Surveys	6
3	2017 Survey by Southampton Common Forum.....	6
4	Results.....	7
4.1	Survey Respondent Numbers & Accuracy	8
4.2	Respondents' Place of Residence	8
4.3	Respondents' Ethnicity	10
4.4	Respondents' Age	10
4.5	Frequency of use of The Common.....	12
4.6	Respondents' Access to Outside Accommodation	15
5	Respondents who visit at least once a year.....	16
5.1	What do the respondents like about The Common?.....	16
5.2	What respondents dislike about The Common?	17
5.3	Priorities for Improvements.....	23
6	Respondents who visit less than once a year or never.....	26
6.1	Main reasons for not using The Common.....	26
6.2	Priorities to improve The Common's attractiveness	26
7	Use of The Common.....	27
7.1	Respondents' Activities.....	27
7.2	Respondents' attendance at organised events	28
7.3	Respondents' use of facilities	29
8	Analysis by Age Group	29
8.1	The Retired Couple	32
8.2	The Young Family	32
8.3	The Young Professional.....	33
9	Summary & Conclusions	33
	Appendix A: Survey Questions.....	36
	Appendix B: Organisations who promoted the Survey.....	38
	Appendix C: Question Response Rates	39
	Appendix D: Tabulation by Age.....	40

1 EXECUTIVE SUMMARY

This is the largest study of the views of Southampton residents about their Common, comprising over 2,190 respondents from across Southampton and beyond; the last survey was in 1977. The results have been analysed in conjunction with the 2011 census data.

It is representative of the City's adult (18+) users of The Common and provides an authoritative account of their views.

The study shows that:

- **The Common is a valued amenity accessible to the great majority of Southampton residents** (Section 4.5):
 - It is appreciated and used (at least once a month) by residents who live within 3.58 km (2.2 miles) of The Common who mostly use it on a weekly basis.
 - It is readily accessible to the 162,000 city residents (63% of the city's population) who live within 3.58km.
 - It is not the preserve of the residents in its immediate vicinity.
- **Users of The Common reflect the ethnic diversity of the City's population** (Section 4.3):
 - The users of The Common match the overall ethnic diversity of the City, as measured in the 2011 census.
- **The Common is most popular with city residents from 30 to 69 years old** (Section 4.4):
 - 30 to 39 year olds are the largest user group often comprising young families with children.
- **The Common is highly valued as an open, natural green space primarily for walking and recreation** (Section 5.1):
 - It is appreciated as a natural green space in the heart of the City, which is used for a wide variety of activities important to physical and mental well-being.
- **The Common significantly supports green travel in the City** (Section 7.1):
 - The second most popular activity (after walking) is commuting by foot or bike.
- **The top priorities for improvement wanted by users are** (Section 5.3):
 - **Children's play facilities:** The provision of sufficient and well maintained, modern play areas (including water play) is a major issue. [The survey was done whilst work on the new play area was continuing, which will go some way to addressing this issue].
 - **Provision of public toilets**
 - **Litter and waste management**
 - **Street lighting and personal safety**
 - **Quality of the footpaths**
- **Inadequate maintenance and resources** (Sections 5.2 & 5.3)
 - The lack of maintenance and resources underpin the great majority of users' concerns above.
 - It is also apparent in the poor condition and state of the lakes and the Hawthorns Wildlife Centre, as well as the failure to effectively deal with anti-social behaviours.

- Lack of management of The Common to both enhance its biodiversity (e.g. with wildflower meadows and better habitat management) in some areas and open up wooded and overgrown areas for recreational uses.
- Other important issues are (Section 5.3):
 - **Conflicts between users, notably, pedestrians, cyclists and dog walkers.**
 - **The nature and management of organised events.**
 - **Improved eating and drinking facilities.**

Southampton Common Forum Management Committee, December 2017.

2 BACKGROUND

2.1 SOUTHAMPTON COMMON'S HISTORY

Southampton Common, today¹, comprises 365 acres (1.48 km²) of semi-natural managed landscape situated 1.6 miles north of the city centre. It consists of woodland, parkland, heathland, marsh streams, three lakes (fishing lake, a duck pond and a boating lake), a play area, the Hawthorns Wildlife Centre, the Cowherds public house. Parts are designated as Sites of Special Scientific Interest. A large cemetery, established in the 19th century, is located at its south west corner.

The Common has existed for over a millennium. During that time it has evolved and changed to support the development and growth of Southampton, from being a place to graze animals and forage, make bricks, administer justice at the Leet Court (and nearby town gallows!) and provide water reservoirs for the growing city. In the 19th Century the Marsh Act (1844) and the Southampton Marsh and Markets Act (1865) settled its purpose as a place of recreation for the public:

"for ever devoted and kept exclusively as parks, gardens, pleasure grounds, play grounds and open spaces for the general and public advantage of the inhabitants of Southampton and persons resorting thereto, and with such statues, fountains, seats and other ornaments and conveniences for public use as the Corporation from time to time think fit"

It has seen a wide variety of informal and organised recreational uses, including walking, cycling, play, fishing, horse racing, shooting, carriage rides, a zoo, football, cricket and golf.

In recent years funding cuts by central government to local authorities' funding has meant that the resources available to Southampton City Council to maintain The Common have declined². This is a pattern repeated across the United Kingdom. The resulting decline of public parks in the UK is a matter of national concern and the subject of a recent report by the Communities and Local Government Committee³.

¹ In earlier times The Common was more extensive and its boundaries have been the subject of legal dispute.

² In 1977 6.0 FTE staff were employed to maintain The Common (see [4] below). In 2017 2.6 FTE staff are deployed for operational activities on The Common. (In addition to 1.0 FTE Ecologist, 1.4 FTE staff to provide environmental education to schools etc. based at The Hawthorns and an Area Manager – not based on The Common to manage the team.)

³ Communities and Local Government Committee, Public Parks, Seventh Report of Session 2016-17, 11 February 2017.

2.2 PREVIOUS SURVEYS

To our knowledge there has only been one previous survey of Common users. This was conducted 40 years ago in 1977 by the City of Southampton Society⁴. This publication also provides an extensive account of the history, physiography, geology and natural history of The Common. That survey was established to discover who uses The Common and why. It was conducted through face to face meetings with members of the public on The Common along with an observational study. 503 questionnaires and 91 observational surveys were completed.

More recently, a student at King Edward VI School, Mr George Vincent, has conducted a study that forms his A-level project⁵. He examines the effect of age on an individual's perception of The Common; and includes a small survey and an observational study.

3 2017 SURVEY BY SOUTHAMPTON COMMON FORUM

The decline in resources available for The Common in recent years has increased public concern about its state and management by Southampton City Council. Although much loved by many people there are obvious signs of its deterioration, including the poor state of the Hawthorns Urban Wildlife Centre fabric and diminished educational activities, play area, paddling pool, lakes and the encroachment of woodland at the expense of open space. The limited funding had resulted in the Council not being able to implement its 1992 Management plan.

In February 2016, local resident associations adjacent to The Common and allied local groups with a historical interest in The Common joined forces to establish a community voice to represent all Common users. From this Southampton Common Forum (SCF) developed and was formally constituted in January 2017 as a community organisation who aim is:

To be a focal point for issues affecting The Common for everyone who uses, enjoys or appreciates it.

Its objectives are:

- To see that all those with an interest are informed of any issues that may affect The Common.
- To give all those with an interest a means of influencing and contributing to those issues.
- To work alongside Southampton City Council, to contribute towards the positive management of The Common.
- To raise awareness of The Common and its benefits to the City.
- To take any other appropriate action consistent with the aim of the Forum.

SCF currently has nearly 900 friends from across the City on its mailing list and over 300 followers of its Face Book page .

SCF considered it essential that it understood the range of views of the public from across the City and not just those who lived near The Common who had been most involved in its establishment. It set widespread public engagement as its top priority and the survey was devised as the main vehicle by which it would achieve this end. The results of the survey would be used to inform SCF's work in partnership with the City Council to develop a new ambitious plan for The Common and

⁴ Southampton Common, City of Southampton Society, November 1979.

⁵ <https://kingedward.maps.arcgis.com/apps/Cascade/index.html?appid=99f58e62a30241bfb7f05d76b95058a0>

consideration of how more resources might be attracted to make The Common a better place for all the residents of the City.

The 2017 survey was launched in May 2017 and closed at the end of October. It was an online survey which sought to understand the views of a wide range of citizens about The Common and how they use it. We estimate that it has involved about three person months of work by the Committee.

The survey comprised three main sections:

- i) Information about the respondent.
- ii) Views (likes, dislikes and improvements they would like to see) about The Common requiring free form responses.
- iii) Information about how and what facilities they use on The Common.

The questions were designed not to lead the respondent to a particular answer, especially in section ii) where open questions were posed requiring free form answers.

The last section was multiple choice and optional. For those respondents who indicated that they used The Common less than once a year the second section enquired about their reasons for them using it infrequently and what would enable them to use it more often.

The survey questions are listed in Appendix A.

The survey was disseminated on the SCF website and Facebook pages, intensively on a range of social media and by a number of organisations promoting it on their web pages or email shots. In addition, the SCF Chair promoted it on Unity 101 Community Hour (with Councillor Satvir Kaur), as well as with meetings and presentations at the Chinese Association of Southampton, Go Southampton!, King Edwards VI School Geography Society, Richard Taunton's College, Solent University Students' Union, University of Southampton, Southampton Medina Mosque, Singh Sabha Gurdwara, University of Southampton Students' Union. The survey was also promoted on The Common itself with posters⁶, the opening of the new play area event, as well and with table flyers in the Hawthorns Café. Paper copies were available from the Hawthorns Office and could also be downloaded from the SCF website.

We are very grateful to the generous help in disseminating the survey we have received from many people and organisations, which are listed in Appendix B.

4 RESULTS

The anonymised raw data is freely available on the SCF website (southamptoncommonforum.org) as an open public resource.

This report analyses the responses in combination with publicly available data from the 2011 UK census at post code level. Answers to open ended questions were analysed by tagging them against a range of characteristics, which themselves emerged from the answers, or using a word cloud, as appropriate. The response rates for each question are tabulated in Appendix C.

⁶ We note that on four separate occasions all the posters (some 22 in all) were torn down within 24 hours of installation by person(s) unknown with a clear intent to deny city residents their voice.

4.1 SURVEY RESPONDENT NUMBERS & ACCURACY

A total of 2,190 people completed the survey and 91% went onto complete the final section. Compared to many surveys this is a large sample size and gives a high degree of confidence in the results: For example, in theory, a sample of 1,063 people drawn from the current population of the City, which is currently 254,275⁷, at the standard 95% confidence level, would provide a 3% margin of error⁸.

4.2 RESPONDENTS' PLACE OF RESIDENCE

The survey attracted respondents from across Southampton and beyond. Respondents were not limited to the near vicinity of The Common as can be seen clearly from the diagram below in which each red dot represents the post code of a respondent who gave a valid or complete post code⁹.

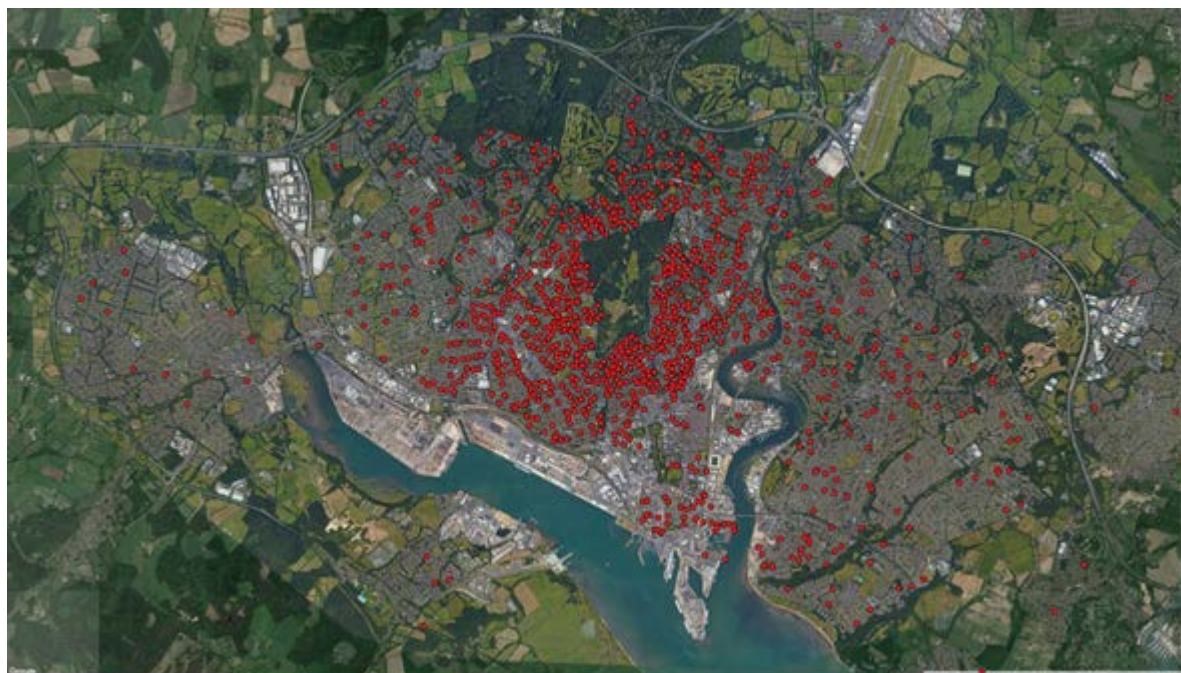


Figure 4-1: Post code location of all the respondents.

Using the post code data for each respondent we show in the diagram below the distribution of the (straight line) distance of each respondent's home (middle of their postcode area) from the centre¹⁰ of The Common. The average distance is 2.2km and 90% live within 4.25 km.

⁷ Mid-year population estimate 2016, Office of National Statistics.

⁸ <https://www.surveymonkey.com/mp/sample-size-calculator/>

⁹ At total of 1,961 gave valid or complete post codes .

¹⁰ The centre of The Common is defined as the junction of Coronation Avenue with the footpath from The Bellemoor public house entrance to the underpass (50.928928 North, 1.40882 West).

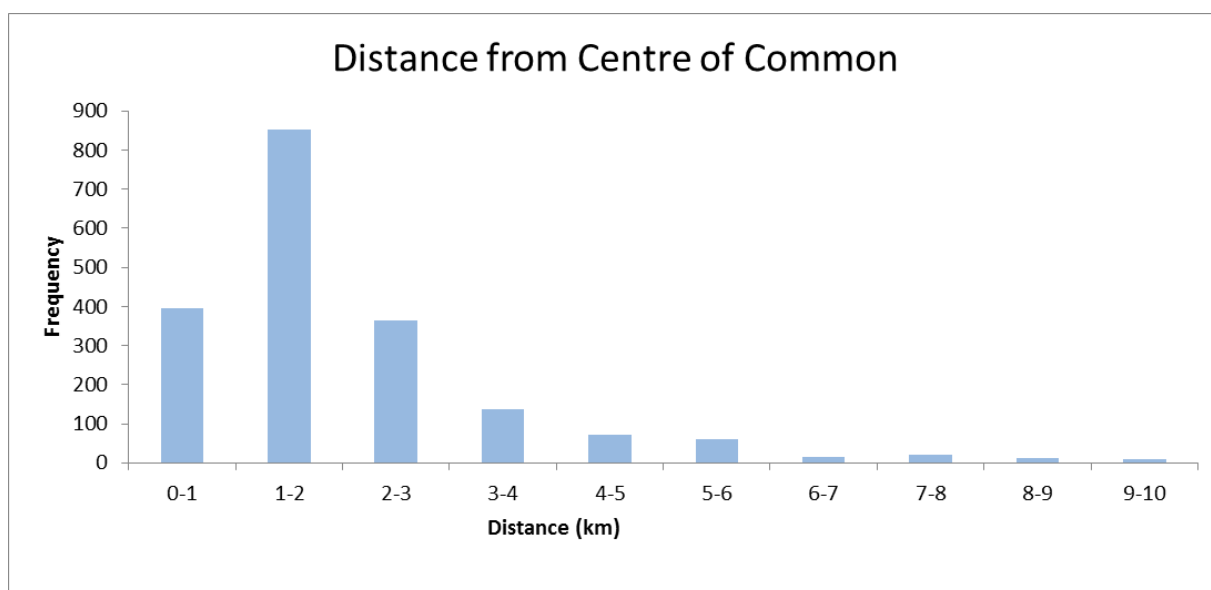


Figure 4-2: Distribution of distance of respondents from the centre of The Common

All Council wards were represented by the respondents, as shown below.

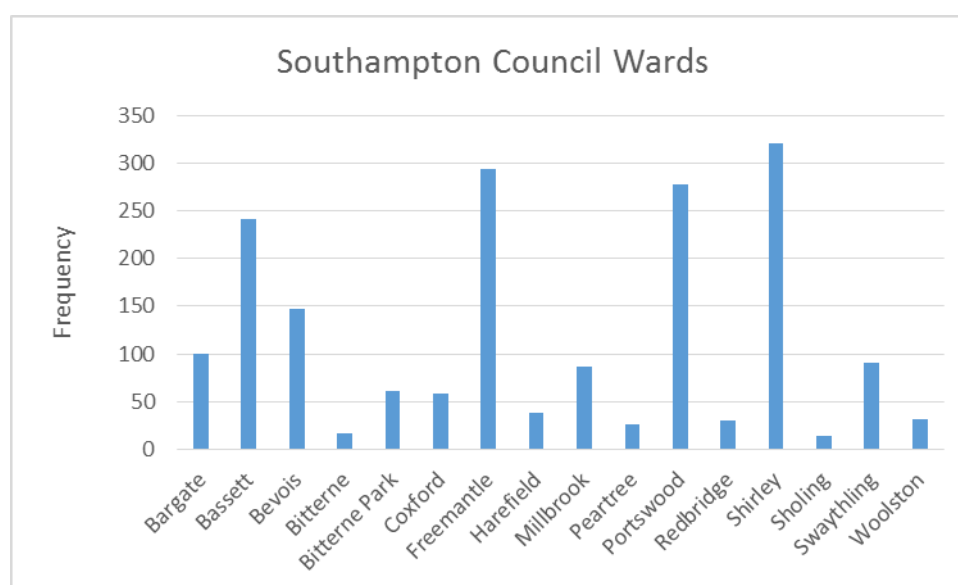


Figure 4-3: Response rate by Council ward.

The high number of people from Freemantle and Bevois using The Common might be because these are wards with a relatively high population density and very little local amenity space of their own. This compares to a ward which is better provided with amenity space, such as Swaythling, that benefits from Riverside Park.

The responses came mainly from three parliamentary constituencies:

Southampton, Test	1,216
Romsey and Southampton, North	362
Southampton, Itchen	287

4.3 RESPONDENTS' ETHNICITY

Users of The Common reflect the ethnic diversity of the City's population:

It is not the preserve of residents in its immediate vicinity.

We combined the Census 2011 data with the respondents' post code data to estimate their ethnicity. The results are shown below and indicates that the respondents' ethnicity is representative of the ethnicity of Southampton as a whole.

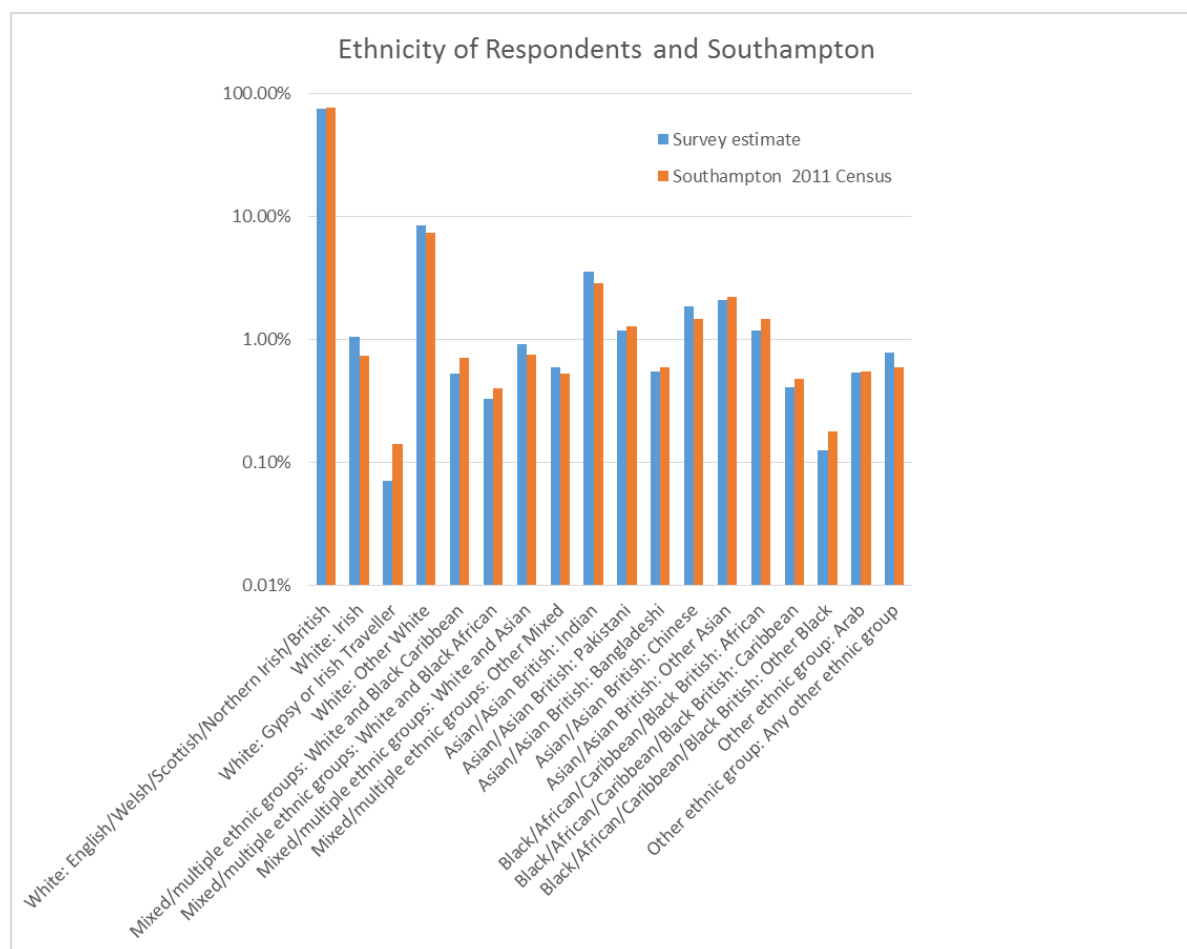


Figure 4-4: Estimated ethnicity profile of respondents compared to the profile of the whole of Southampton; using 2011 census data.

4.4 RESPONDENTS' AGE

The survey attracted a broad range of age groups, with the exception of the under 18's which, despite significant efforts to engage them, are under-represented. The distribution is shown below where it is compared to the distribution for all residents in the City¹¹. Adult respondents (over 18) are well represented and very broadly follow the City's age profile. Respondents aged between 30

¹¹ Southampton 2016 Mid-year estimate, Office of National Statistics.

and 69 years use The Common more frequently than most citizens, with those aged 30 to 39 the largest group. This group along with 40 to 49 year olds are much more concerned about the children's play area (see section 8 below) and therefore comprise many families using The Common with their children.

Under 18's are poorly represented compared to the city population. However, they are to some extent represented, by proxy, through their parents' responses.

The Common is most popular with city residents from 30 to 69 years old:

30 to 39 year olds are the largest user group often comprising young families with children.

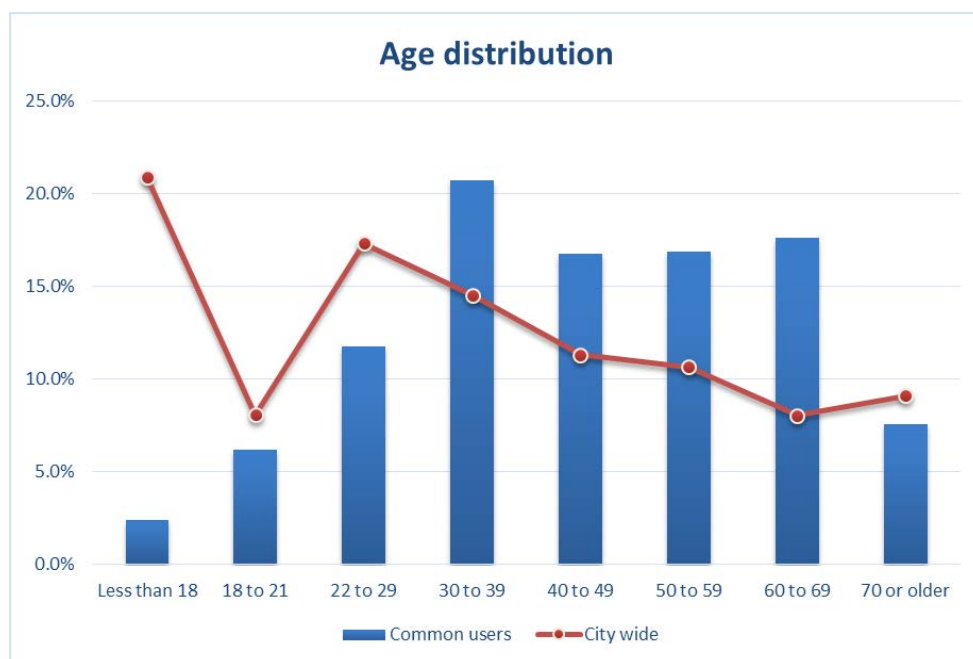


Figure 4-5: The Age distribution of respondents (blue) compared to all City residents (red as reported in the 2016 Mid-Year Estimate from the 2011 census).

4.5 FREQUENCY OF USE OF THE COMMON

The below diagram shows that the majority of respondents (87%) visit The Common at least once a month or more frequently; visiting once a week being most popular.

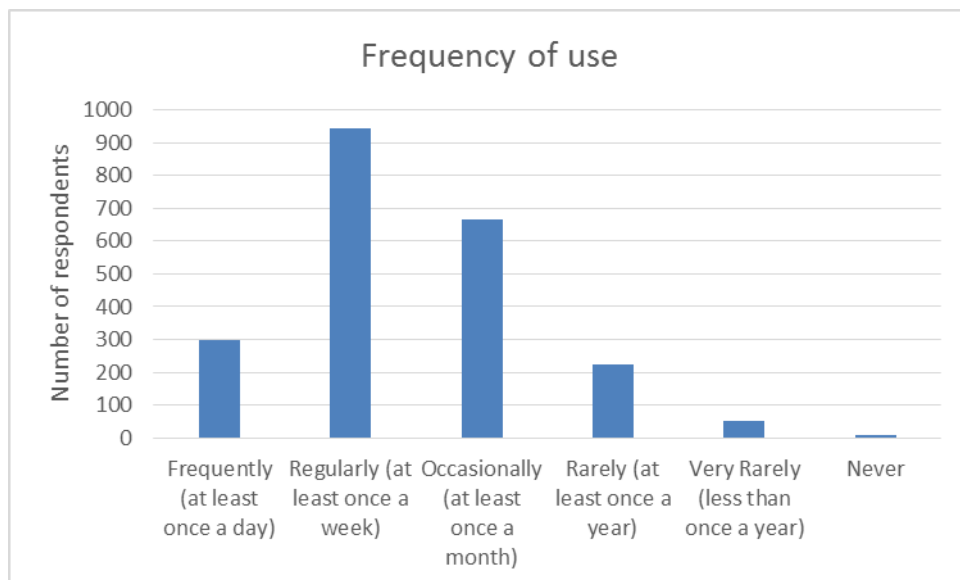


Figure 4-6: Frequency of use of The Common by respondents

The diagrams below show the post codes of the respondents who visit The Common, daily, weekly and monthly.

Daily



Figure 4-7: Post codes of respondents who use The Common daily.

Weekly



Figure 4-8: Post codes of respondents who use The Common weekly.

Monthly



Figure 4-9: Post codes of respondents who use The Common monthly.

The spatial distribution of the distance of these respondents from the centre of The Common is shown below as a cumulative distribution. Also shown, as a green line, is the cumulative distribution of residents from the 2011 census data.

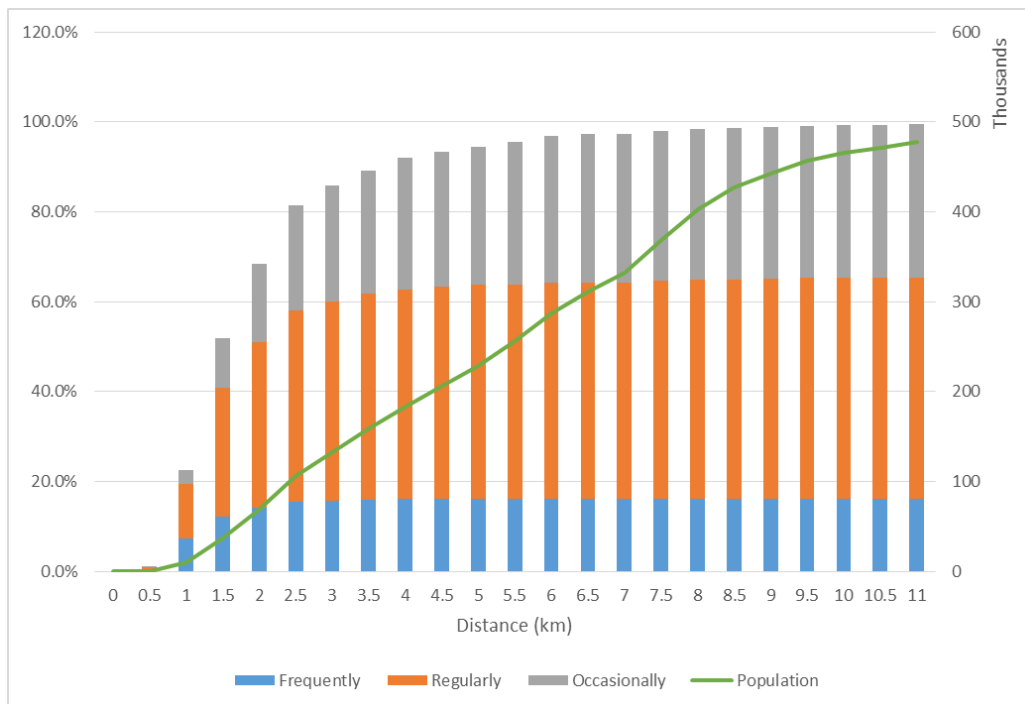


Figure 4-10: This chart shows the cumulative distribution of respondents as a function of distance from the centre of The Common for those who visit, daily, weekly or monthly. The green curve is the cumulative distribution of residents from the centre of The Common, taken from the 2011 census data – it is referred to the right-hand axis.

90% of this group live within 3.58km of The Common. The 2011 census data shows that 162,000 people (and 66,000 households) live within this distance of The Common.

The Common is a valued amenity accessible to the great majority of Southampton residents:

It is appreciated and used (at least once a month) by residents who live within 3.58 km (2.2 miles) of The Common who most commonly use it on a weekly basis.

It is readily accessible to the 162,000 city residents (63% of the city's population) who live within 3.58km.

4.6 RESPONDENTS' ACCESS TO OUTSIDE ACCOMMODATION

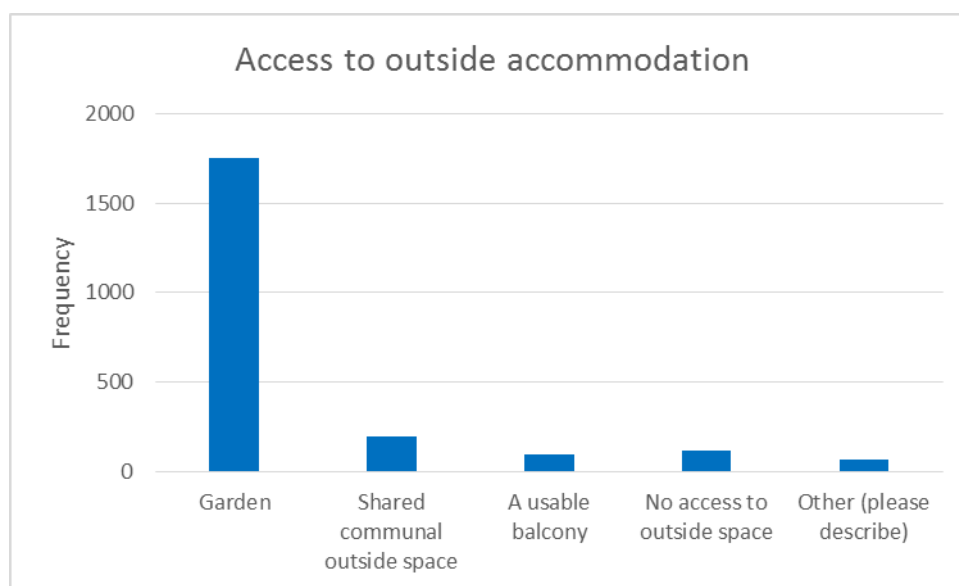


Figure 4-11: Distribution of respondents' access to outside accommodation.

The great majority of respondents have access to a garden; lack of access to outside accommodation does not seem to be a factor in the attractiveness of The Common to residents.

The comments powerfully convey the love and passion of users for The Common as an open green space in the middle of the city which supports a wide range of activities in a diverse range of natural landscapes. A place for the community that supports their physical and mental wellbeing; a place for walking and tranquil reflection, a place for children to play, a place that brings the community together.

The Common is highly valued as an open, natural green space primarily for walking and recreation:

It is appreciated as a natural green space in the heart of the City, which is used for a wide variety of activities important to physical and mental well-being.

5.2 WHAT RESPONDENTS DISLIKE ABOUT THE COMMON?

We summarise the responses from the question “What do you dislike about The Common?”. This proved to provide a rich range of feedback about the main concerns people have with The Common. It is worth noting that, despite significant issues being raised, a group of people are happy with The Common and explicitly stated there was nothing they disliked.

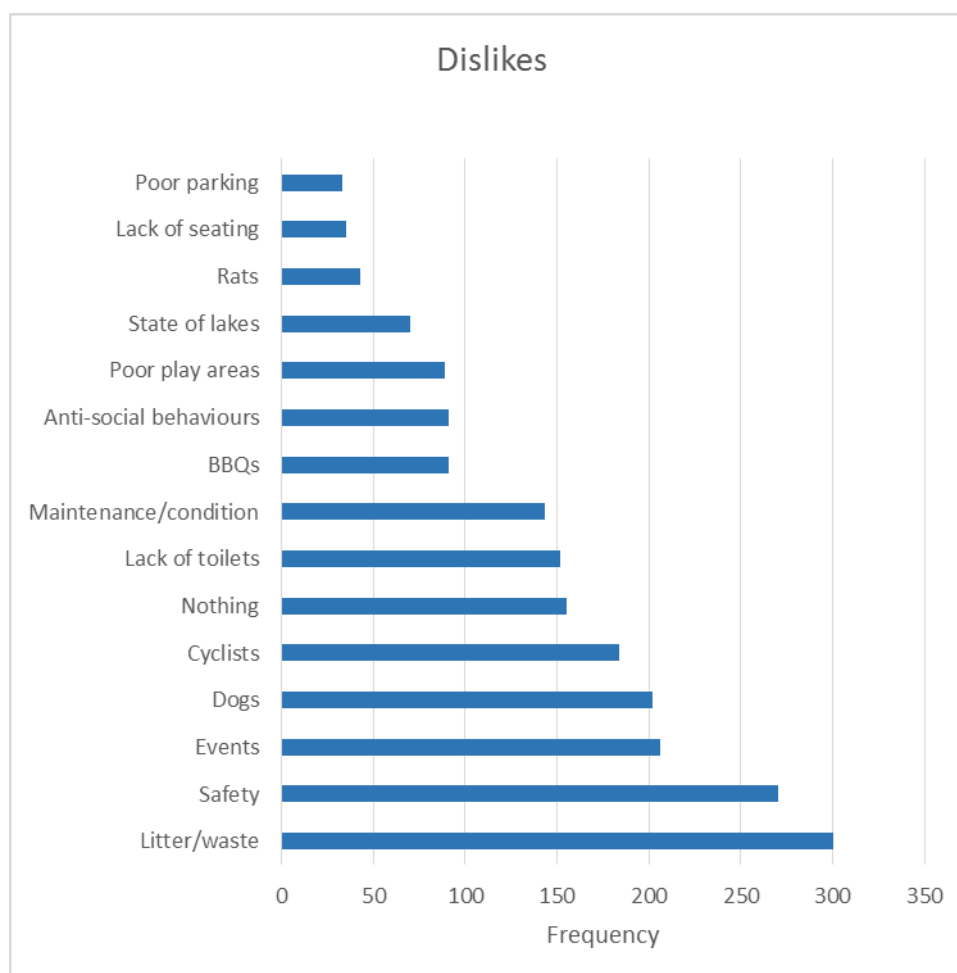


Figure 5-2: Users' dislikes.

Litter

"Litter from overflowing bins on hot days and dropped litter."

"Dog walkers who do not pick up there dog litter and the general public who leave litter."

"The litter, especially after events-Common People. The tins and rubbish routinely thrown in the ponds upsetting the wildlife."

"Have found a sharps box and noticed there is a lot of drug use."

The main issue raised concerned the inadequacy of the collection of litter from bins and the capacity of the litter bins. This is most prevalent on warm summer days when The Common is most popular and there is additional litter from picnics and barbecues. The overflowing bins are scavenged by magpies and dogs.

Other issues raised include:

- Users who do not pick up their litter or dispose of it in the bins.
- People using the woods as toilets.
- Sharps and condoms associated with drug use and casual sex.
- Dog mess that is not being bagged and picked up by some owners or dog waste bags not being placed in the bins.
- The prevalence of litter in lakes, especially the duck pond and the boating lake.

Safety

"Lack of lighting at night in many areas, raises concerns, especially for women."

"Bit spooky in the dark"

"Lack of personal safety against muggers and sexual offenders and rough sleepers."

"Many "no-go" areas, such as the wooded parts, where I would certainly not walk alone"

"It sometimes doesn't feel safe to visit or walk across certain parts of it on my own. I have known someone personally who was mugged in the early evening on their way home from work."

"I was attacked their once, but a while back now."

"Men hanging about on Cemetery Rd. Personal safety off main paths"

The main concern is personal safety during the hours of darkness, not least because of the lack of adequate lighting along many of the paths. This affected users more during winter and is perceived as a greater risk to women.

Other issues raised were:

- Safety in the more isolated and overgrown areas of The Common
- Feeling threatened from rough sleepers, drug users, vandals, drunks as well as men engaged in casual sex on Cemetery Road.
- Lack of police presence.

Events

"The fun fair, it really ruins the common and we avoid it all costs when it's on."

"...but don't like events like The Common People which enclose the large fields on the Shirley side."

"taking them out of action for about two weeks sometimes over school holidays. I love festivals but as the common is not privately owned I don't think any festival on it should be ticketed."

"I dislike that when events are held e.g. common people, the main field is left in an absolutely horrendous state and there does not appear to be any provision to return it to how it was e.g. grass seed or turf."

The main concern is around the negative impact of large commercial events, which restrict access to parts of The Common for what are considered to be lengthy periods of time, cause damage that is not rectified afterwards and which can create loud noise disrupting the peace of The Common and nearby residents. Common People and the fun fair were highlighted in this regard.

Other issues include:

- Concern that a free public space is being used for commercial purposes.
- The impact of ParkRun.

Dog Control

"Dogs often out of control. My friend was knocked over by some earlier this year and got a bad concussion."

"Sadly the park is frequented by a large number of irresponsible dog owners who object to keeping their dogs on lead near or on the paths."

"Dogs running free, too many dogs with single 'owner', concern for young children coming in contact with dog muck."

"Rubbish that is just left by others including dog poo, even in bags but not put in bins provided."

"...dogs disturbing birds at ponds"

The main concerns centre on the number of dogs on The Common and some owners not controlling them adequately, allowing them to run free off the lead or not clearing up their dog's mess.

Other concerns include:

- Dogs in the playground putting children at risk.
- Dogs disturbing the wildlife, especially birds on the lakes.

Cyclists

"Fast cyclists are frightening."

"Cyclists who ride too fast and without consideration for children and dogs."

"A bike rode into me on Monday, next to the duck pond."

"Occasional stupidity by youngsters bringing motorbikes onto common."

"A lot a push bikes use the common, and not all stick to the cycle paths, also ride very fast on several occasions my children have nearly been knocked over by cyclists some have even got quite aggressive when approached about their speed."

"Path surfaces are often in poor repair. Potholes caused me to come off my bike last winter."

The main concern is in relation to conflict between cyclists, pedestrians and also dogs. Pedestrians feeling unsafe from cyclists traveling at speed, often cycling on "No Cycling" paths and being inconsiderate or not using a bell.

Other concerns include:

- Motorbikes being ridden on The Common.
- Cyclists concerned about the state of the paths and speed bumps.

Nothing

"Pretty happy with it!"

"Nothing, it is a brilliant facility"

"I'm not a local resident (but my children live in Southampton so I visit reasonably often), and I always walk or sit at the common. I haven't experienced anything to dislike."

Lack of Toilets

"No toilets, unless Hawthorns is open. "

"...I think for people with young children it would be helpful to have toilet facilities by the park so that they don't have to pack up/ take things with them every time a child needs to go."

"Lack of clean decent toilets!"

The concern here is that the only toilets on The Common are at the Hawthorns when it is open.

Maintenance and Condition

"Not well maintained, brambles, nettles overgrown trees everywhere. Grass areas need to be better cut and maintained."

"Grubby old facilities. Needs a new pool and playground which are well maintained."

"Apparent lack of effective management of natural environment."

"It is looking neglected - marked increase in nettles."

"Some of it seems a bit unkept and old." (sic)

"...the old boating lake looking tatty and unloved."

"Current state of duck pond and fencing. Holes left in main field after events - really dangerous for small feet."

"Overall the place does seem to have an 'air of neglect' and not treated as a 'Jewel in the Crown'!"

"Some areas are quite run down."

==

Major concerns include:

- Pathways; the poor maintenance of paths: prevalence of pot-holes and overgrowth from vegetation.
- Play areas that are tired and not maintained.

Other concerns include:

- Increasing areas of undergrowth at the expense of open areas and access.
- Trees not properly managed.
- The lakes in a poor state.
- Outdoor fitness equipment not maintained and in a poor state.
- Inadequate drainage.
- Declining funding and maintenance by the Council.

Anti-social Behaviours

"The constant parade of old men looking for sex with others around the Cemetery and occasional yobs there to intimidate such people."

"...Drug users. Drunks. Homeless people...."

"The vandalism!"

The main antisocial behaviour issues include:

- Men engaged in casual sex encounters – mainly at night on Cemetery Road.
- Use of drugs and alcohol – particularly when in groups.

Other issues include:

- Vandalism.
- Lighting fires.
- Homeless people living on The Common.
- Flashers.

Barbecues

"The indiscriminate use of portable barbecues and open fires; finding bottles, cans and food packaging spread over a wide area is an upsetting but regular occurrence after weekends and fine, sunny days. "

"People using disposable bbq's and ruining the grass."

"There is nowhere to bbq...like in Australia all parks have outdoor bbqs set up."

"Public BBQ's would fabulous and more seating - perhaps picnic style - so families can enjoy a meal together in The Common. "

"Absolutely BBQs should be allowed, but only if they are standing / off grass."

Two opposite views were expressed:

- Objection to barbecuing (which is currently prohibited by bylaw) because they can burn the grass and create litter and mess.
- Regret that The Common did not have public barbecue facilities.

Play Areas

www.southamptoncommonforum.org [facebook.com/SouthamptonCommonForum](https://www.facebook.com/SouthamptonCommonForum) @SotonCommonF

"The out dated playpark and paddling pool"

"The children's play area is a poor facility with no imagination and lack of adventure"

"The lack of maintainance of the paddling pool"

The children's play area is poor with an unexciting range of equipment."

The main concern is the tired and outdated nature of the play equipment. Other concerns are the lack of fencing, closure and lack of maintenance of the paddling pool.

A new play area was under construction during the period of the survey, being completed in October 2017. It is placed on the site of the paddling pool, and involves an element of water play. Hopefully, this will alleviate some of the concerns raised, but nevertheless it remains the only play area on The Common and there is no longer a paddling pool.

State of the Lakes

"The duck pond has more rats than ducks and could do with a tidy up. The big pond which used to be the boating lake seems like nothing happens there. The water park is closed."

"...sad looking empty boating lake"

"The tins and rubbish routinely thrown in the ponds upsetting the wildlife."

The main issues concern the poor state of the lakes, being poorly maintained and dirty. Concern about the boating lake not being properly used any more.

Rats:

"Too many rats, esp. at duck pond."

Concern about the number of rats, which are a particular problem at the duck pond.

Lack of Seating

...more seating or a cafe for parents to supervise from.

The main issue is the general lack of seating that is available. Other issues relates to lack of seating at play area, need for seating by elderly people and pregnant women.

Poor Parking

"I don't like having to park and walk some way to get to the café/wildlife centre. There needs to be, if anything, more access, to the southern part of the common. The free parking along Hill Lane is very useful though and should be maintained."

The major concern is the lack of parking spaces. Other issues concern their distance from major facilities, especially the play area, and also having to pay for them.¹²

¹² Car parking charges only apply on Cemetery Road for period greater than 4 hours between 8am and 3 pm on weekdays.

5.3 PRIORITIES FOR IMPROVEMENTS

The top priorities for improvements wanted by users are:

Children's play facilities: The provision of sufficient and well maintained, modern play areas (including water play) is a major issue. [The survey was done whilst work on the new play area was continuing, which will go some way to addressing this issue].

Provision of public toilets.

Litter and waste management.

Street lighting and personal safety.

Quality of the footpaths

The diagram and table below summarise the main issues that respondents identified to be priorities.

The table provides further details of the different priorities (the numbers in the table indicate the number of respondents identifying this as a first, second or third priority). The priorities are ordered in terms of the number of first priority responses.

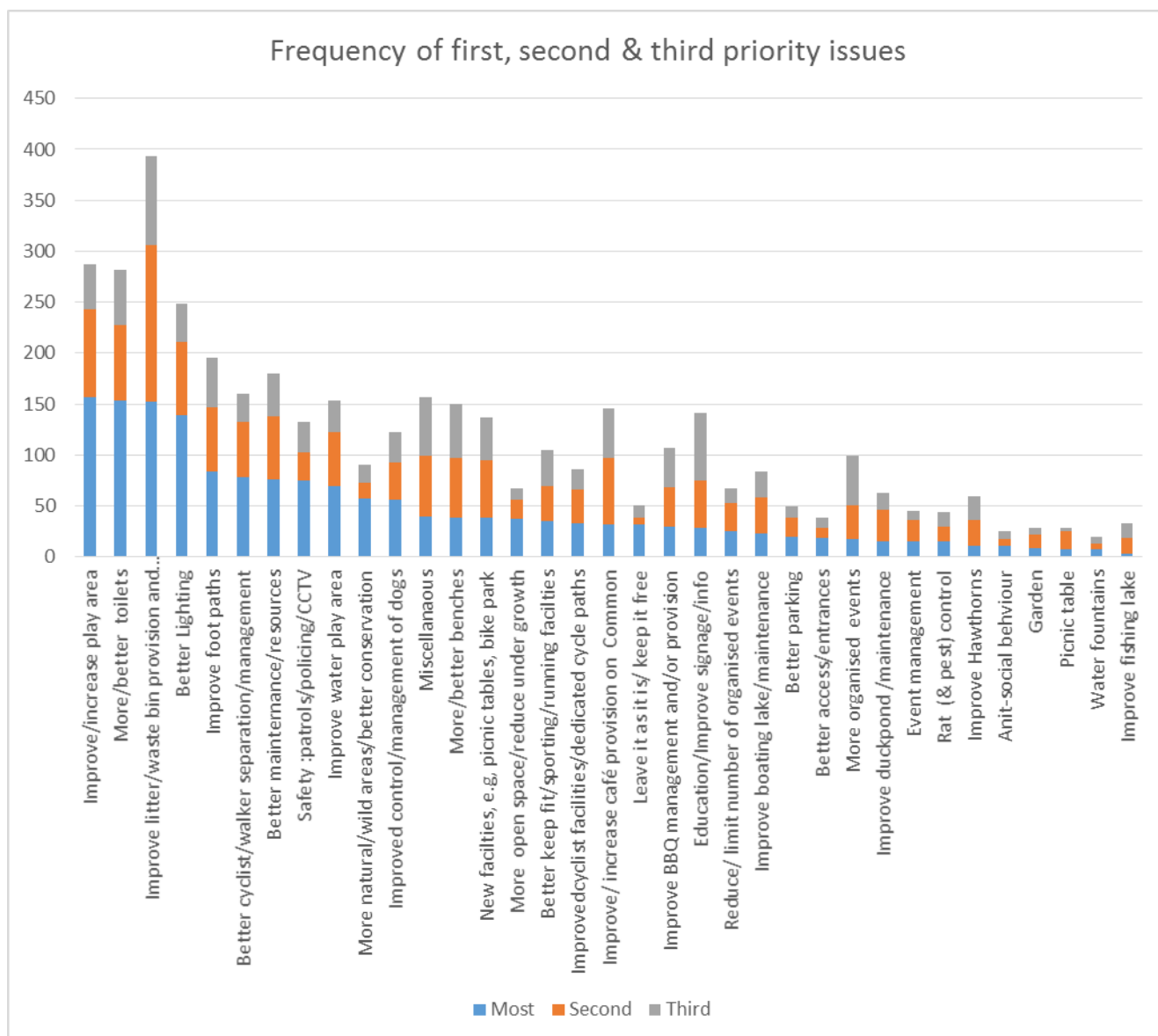


Figure 5-3: Frequency of the first, second and third priorities.

Issue	Priority				Summary
	1	2	3	Total	
More toilets	159	73	55	287	Better and more toilets – especially north end. Clean & well maintained. Baby changing facilities.
Litter	152	154	87	393	More and bigger bins/dog waste bins. Recycling bins. More frequent collection. Enforcement/fines/wardens Information.
Improve play area	151	86	44	281	Improved, especially equipment. Provision for wider age range. Fencing. More play areas, e.g., at north end.
Better Lighting	139	72	37	248	More lighting at night on main paths – especially north/south route.
Improve foot paths	84	63	48	195	Better maintenance of paths, improve surface, repair pot holes, widen.
Better cyclist/walker separation	78	52	28	158	Clearer separated cycle/walker paths, bicycle speed reduction, enforce cycle speed limit, better signage/path markings.

Better maintenance	76	62	43	181	More staff. Better drainage. Lakes, play areas, cemetery. Trees.
Safety measures	75	28	30	133	Patrols/police/wardens, CCTV.
Improve water play area	69	54	31	154	Retain and improve paddling pool – open more often.
More natural areas	57	17	18	92	More wild areas, improved management of flora and fauna habitats, e.g., wildflower meadows. Biodiversity.
Improved control/management of dogs	56	37	30	123	Dogs kept on leads, kept out of play areas, owners clear up mess, more enforcement; policing, fines. Designated dog free/dog friendly zones.
Miscellaneous	40	59	58	157	Ban drones, close Cemetery Road, improve underpass. Park wardens. Improve disabled access.
More benches	39	58	53	150	More benches, especially by lakes, better, more comfortable benches for elderly and pregnant women.
New facilities	38	57	42	137	Nature trails, MTB trails, skateboard park, disc golf course, outdoor cinema, gardens/flower beds.
More open spaces	37	19	11	67	More open, accessible areas, more green space; clear undergrowth.
Exercise facilities	35	34	36	105	Improved and better outside gym equipment and fitness trail. Marked out sports pitches. Better running distance markings.
Improved cyclist facilities	33	34	20	87	Improved/dedicated cycle paths, bike racks.
Improve café provision	32	65	50	147	More and better cafes/eating and drinking outlets, north end or centre, dog & child friendly.
Leave it as it is	32	7	12	51	Leave it alone.
Improve BBQ management	30	38	39	107	Dedicated BBQ area with facilities, minority ban BBQ's.
Signage and information	29	47	66	142	Improve signage; directional, maps, improved public engagement information about Common features (e.g., nature) and events.
Reduce/ limit events	25	28	14	67	Lessen or ban events, especially fun fair.
Improve boating lake	23	35	26	84	Reopen and clean up boating lake. Better maintenance. Keep filled.
Better parking	20	18	11	49	More, safer, parking closer to main facilities.
Better access	19	9	10	38	More access points, safer access across The Avenue.
More events	17	33	48	98	Bring back balloon/flower festival, community events
Improve duck pond /maintenance	15	31	18	64	Improve Cemetery Lake – control rats, clean up & better maintenance. Ban feeding of ducks.
Rat control	15	15	14	44	More effective control of rats, especially at Cemetery Lake.
Event management	15	16	8	39	Reduce noise, improve restoration of grass and clean up afterwards.
Improve Hawthorns	11	25	22	58	Improve/update/invest, Open up garden, more educational activity
Anti-social behaviours	11	12	7	30	Dogging on Cemetery Road and associated litter. Drug users, sharps. Rough sleepers. Vandalism.

Garden	9	13	6	28	Flower gardens.
Picnic tables	8	17	4	29	Picnic area, picnic tables.
Water fountains	7	6	7	20	Provide drink water fountains.
Improve fishing lake	3	16	14	33	Enforce fishing rules. Better maintenance.

6 RESPONDENTS WHO VISIT LESS THAN ONCE A YEAR OR NEVER

53 respondents visited The Common either less than once a year or never.

6.1 Main reasons for not using The Common

"There is nothing to particularly attract me."

"Not on bus route from Lordshill"

"Have access to large garden and to Riverside Park."

Over and above the distance and the difficulties of travelling from where they lived it was felt that The Common was not attractive enough to them.

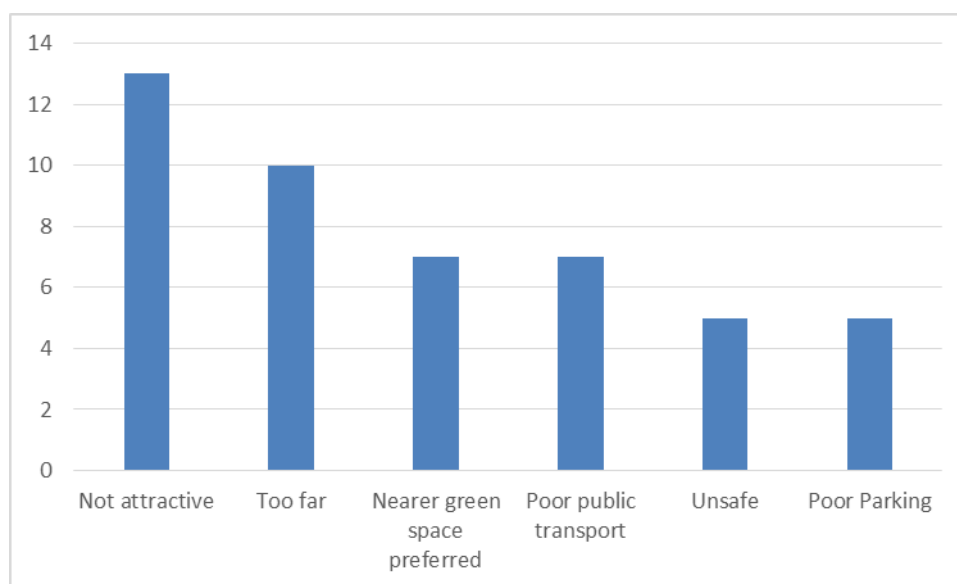


Figure 6-1: Frequency of major reasons for not visiting The Common.

6.2 PRIORITIES TO IMPROVE THE COMMON'S ATTRACTIVENESS

"Tearoom with toilets and nice, reasonably priced menu."

www.southamptoncommonforum.org facebook.com/SouthamptonCommonForum @SotonCommonF

“More toilets”

“events like power in the park balloon festival”

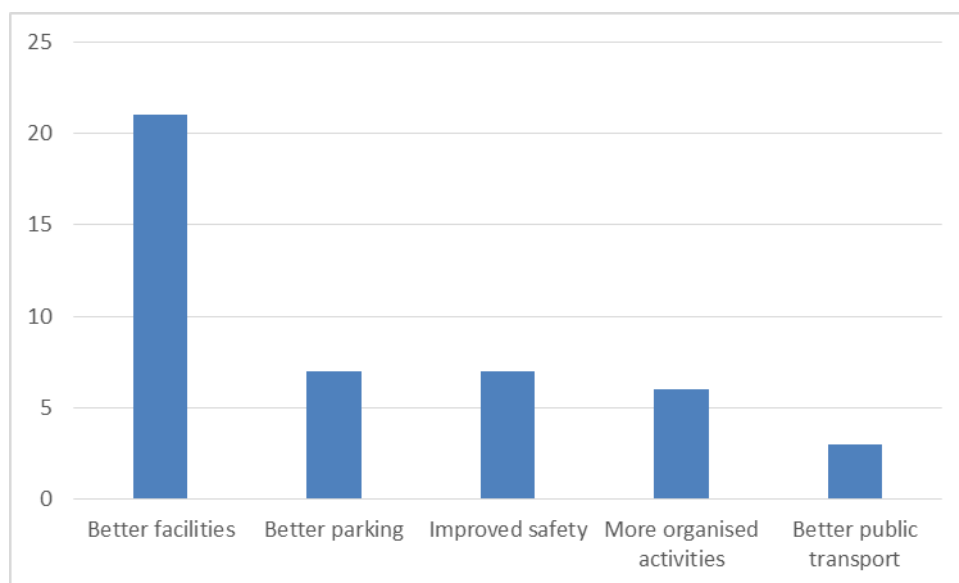


Figure 6-2: Frequency of major priorities for improvement.

To make The Common more attractive better facilities are required, especially toilets and café facilities as well as more organised events. Street lighting would also improve safety.

7 USE OF THE COMMON

7.1 RESPONDENTS' ACTIVITIES

These are summarised in the diagram below. Walking is by far the most common activity as would be expected. Green commuting (walking and cycling together) is followed by jogging or running, nature appreciation, playing with children, sitting, lying, sunbathing relaxing, cycling, visiting the Hawthorns Wildlife Centre, dog walking and barbecuing which were all undertaken by more than 20% of the respondents.

The Common significantly supports green travel in the City:
The second most popular activity (after walking) is commuting by foot or bike.

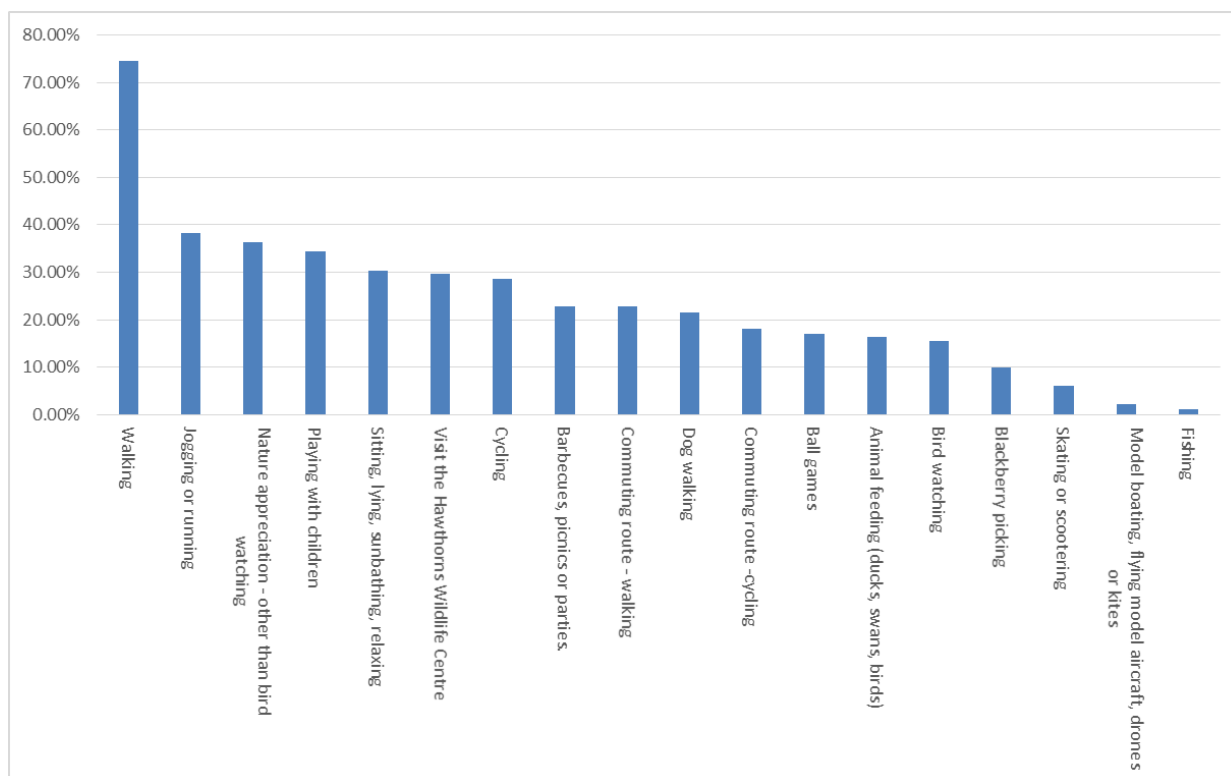


Figure 7-1: Percentage of respondents who engage in different activities.

7.2 RESPONDENTS' ATTENDANCE AT ORGANISED EVENTS

The major organised events on The Common, were well attended by the respondents.

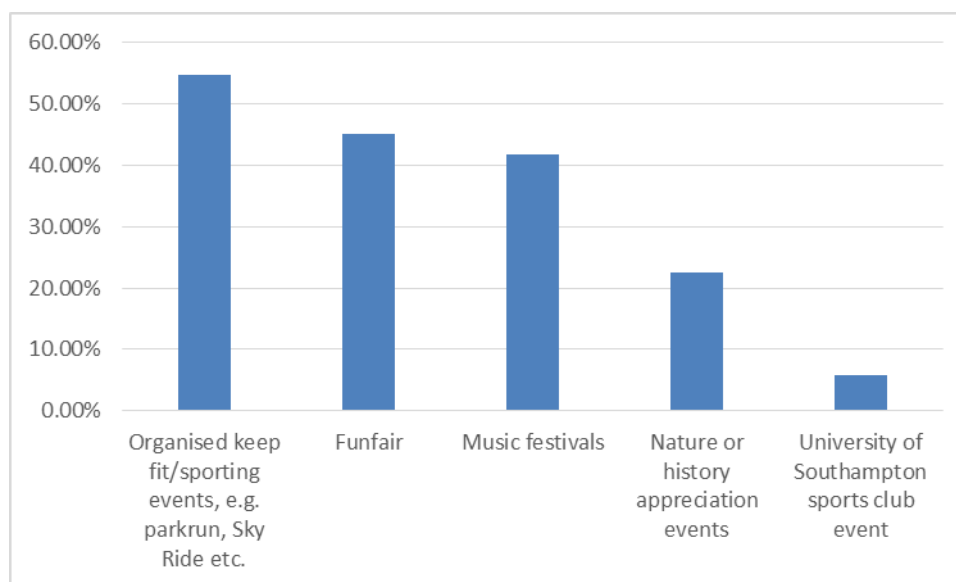


Figure 7-2: Percentage of respondents engaged in different organised events.

7.3 RESPONDENTS' USE OF FACILITIES

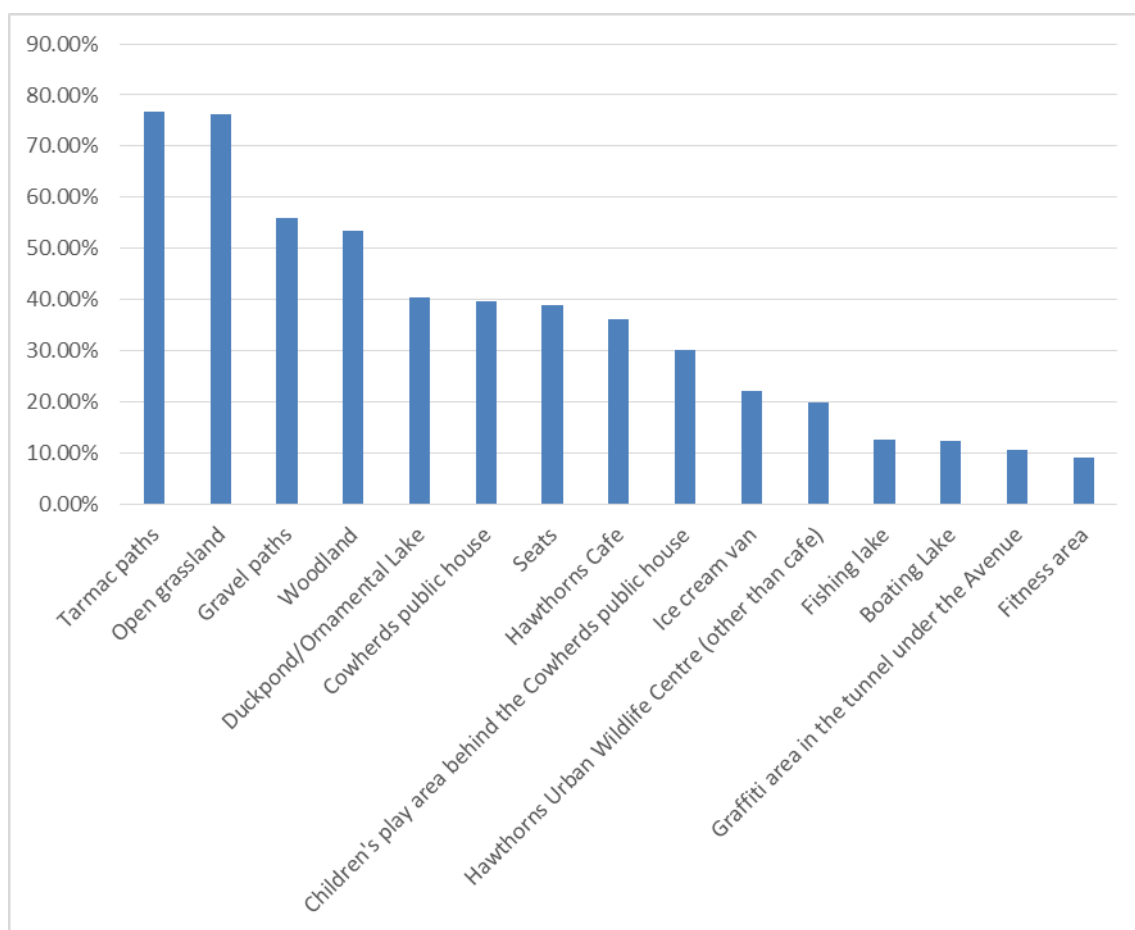


Figure 7-3: Percentage of respondent's use of different facilities.

8 ANALYSIS BY AGE GROUP

Appendix D tabulates the responses by age group for those respondent who visit at least once a year. Here we summarise the most important elements in the diagrams below and by constructing three fictitious cameos to illustrate the main issue for different aged users:

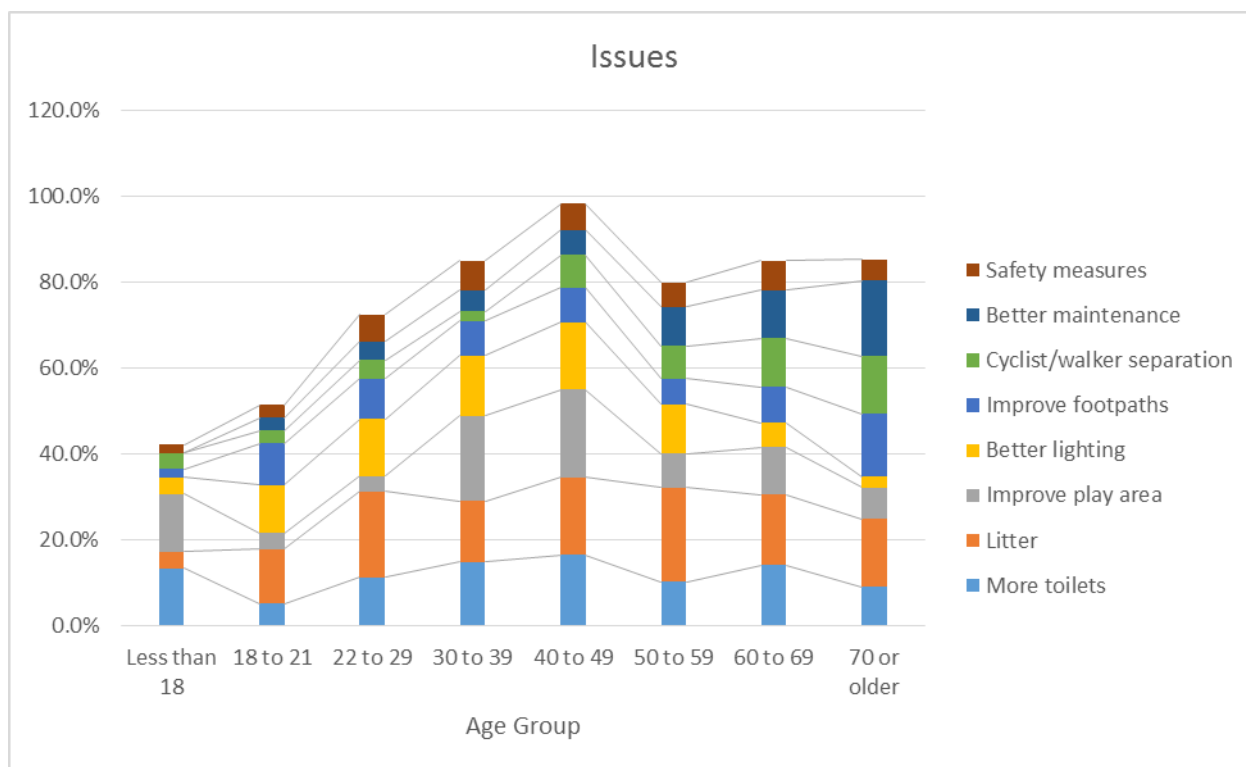


Figure 8-1: The main issues that concern respondents by age group. The vertical axis displays the percentage of users who flagged each issue.

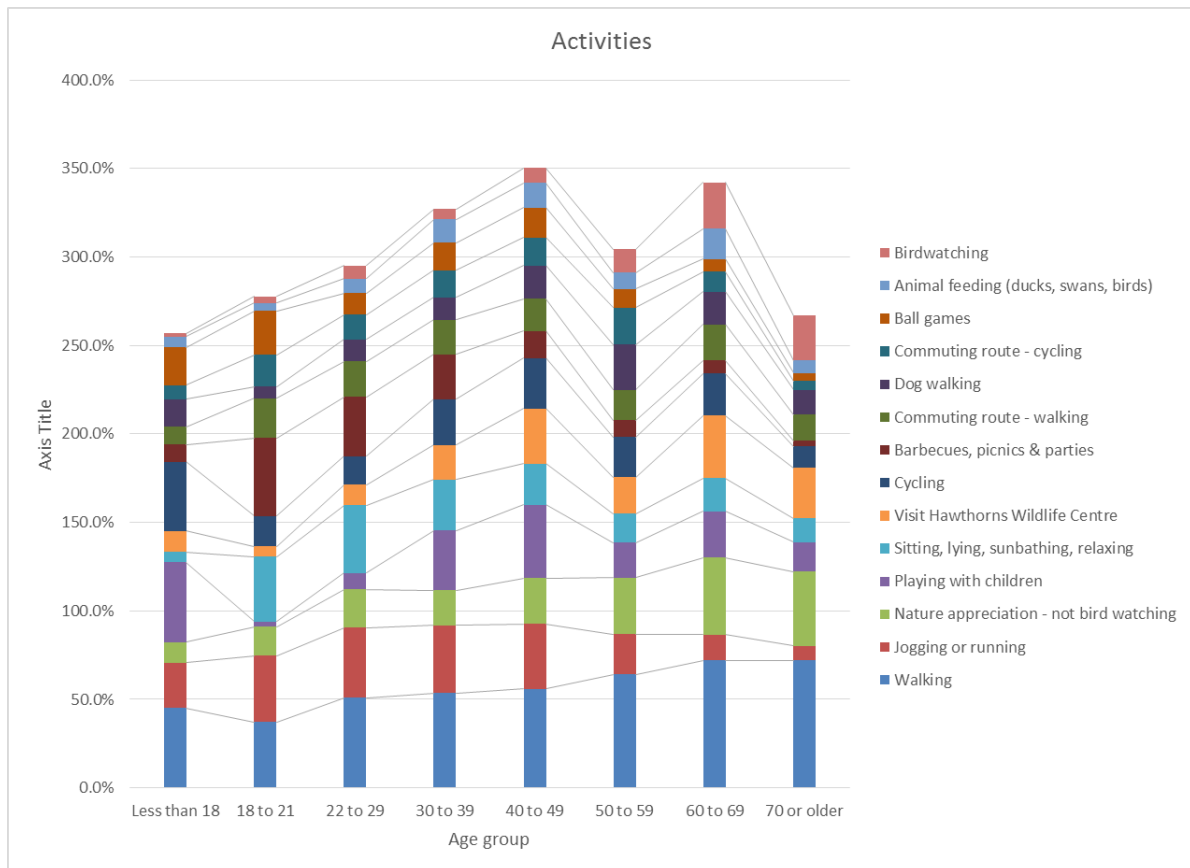


Figure 8-2: Respondents' activities by age group. The vertical axis displays the percentage of users said they were engaged in each activity.

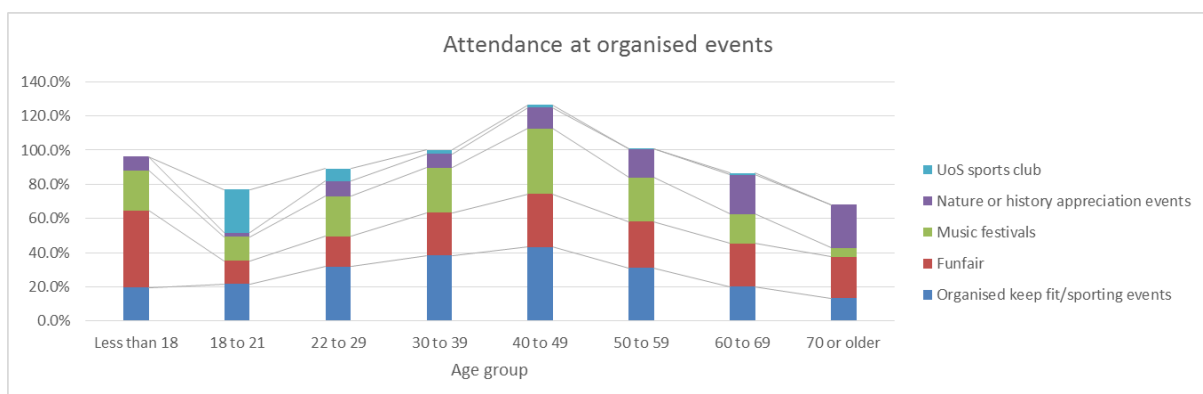


Figure 8-3: Respondents attendance at organised events by age group. The vertical axis displays the percentage of users said they had attended each type of event.

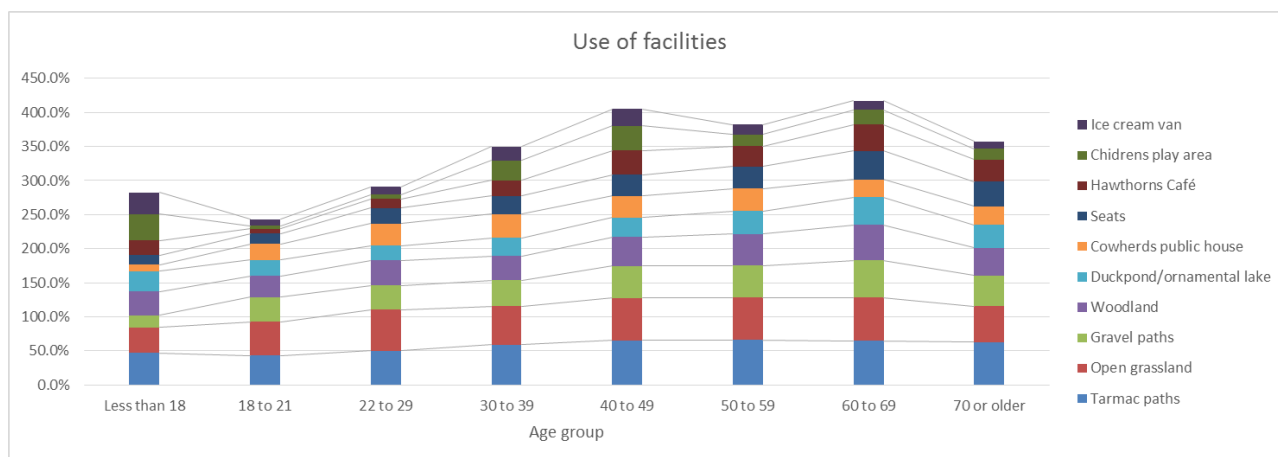


Figure 8-4: Respondents use of facilities by age group. The vertical axis displays the percentage of users who said they used each facility.

8.1 THE RETIRED COUPLE

Mrs Senior (71) is recently a widow who was born in Southampton and now lives in Bitterne. She drives to The Common several times a week, usually mid-morning to avoid the rush hour and parks on Hill Lane. Cemetery Lane would be more convenient but it feels less safe. She has very happy childhood memories of playing on The Common, especially visiting the zoo and the paddling pool.

In her bereavement she now gets great comfort from the peace and nature of The Common by walking along the paths and bird watching; sitting on the benches occasionally to rest – but wishes there were more so she could rest more often. She fondly remembers happy times on The Common with her deceased husband and family. In the late summer she still often goes blackberry picking. At the end of her walk she will often pop in to the Hawthorns for coffee and cake. Occasionally, at a weekend she will visit the play area with her grandchildren.

She is concerned how the maintenance of The Common has diminished over the years, especially the state of the paths. She feels insecure in the presence of cyclists who she feels travel too fast, don't ring their bells, and are suddenly encountered on the no-cycling paths. Consequently, she avoids visiting when The Common is very busy, especially at weekends in the summer when the litter from BBQ's makes the bins overflow.

8.2 THE YOUNG FAMILY

Lucy (41) and Rob (39) are parents to Ben (10) and Hannah (7) and they have a dog called Spot. Lucy and Roger both work locally and are juggling demanding jobs with family life. They live in Swaythling. Lucy commutes across The Common each day to the General Hospital during the summer and worries about bumping into pedestrians and dogs at peak commuting times. However, as the days draw in she detours along Burgess Road as The Common feels too dark and unsafe. She and Rob look forward to visiting The Common at the weekend. It's a great opportunity for the kids to play in the new play area which they love and so much better than the poor and tatty equipment in replaced.

In the summer they enjoy ice cream from the van. Occasionally, if the weather is good in the summer they will picnic or BBQ with a group of other families they know from the PTA. They set up "camp" under a large shady tree with the adults taking to turns to supervise the kids at the play area or in ball games nearby. They dislike the overflowing bins and the rats that they come across all too often when feeding the ducks. They would like to enjoy refreshments at the Hawthorns but are

frustrated that Spot is not permitted inside and that they can't pay by card. Moreover, it seems that kids always need the loo just after the Hawthorns has shut!

Over the years the family have enjoyed the concerts on The Common and the kids the funfair.

8.3 THE YOUNG PROFESSIONAL

Alisha (29) lives in a flat in Freemantle and commutes, by foot, across The Common to her job at the University, but avoids Cemetery Road in the evening because of the shady looking men hanging around make her feel uncomfortable. She will often walk on The Common at lunch time with her colleagues.

She loves the outdoors and goes jogging on The Common several times a week, including Park Run on Saturday mornings and her running club on Monday evenings. She is frustrated at the poor state of the fitness trail, the trip hazards on the paths and the worn out distance markers. In the winter she feels unsafe crossing in The Common in the dark and avoids it unless accompanied or she will go by car if the weather is bad.

In the summer she and her boyfriend often meet up with friends on The Common to spend the day socialising, relaxing, sun bathing and barbecuing. The loos in the Hawthorns are often in a poor state from over use and rather too far away from their favourite spot at the north end of The Common.

She has happy memories of visiting The Hawthorns as a child with her parents, enjoying the exhibits and garden. She is dismayed that the exhibits have now gone to make way for the café and the garden is an overgrown jungle and rarely open to the public.

9 SUMMARY & CONCLUSIONS

This is the largest study of the views of Southampton residents about their Common, comprising over 2,100 respondents from across Southampton. It is representative of the City's adult (18+) users of The Common and provides an authoritative account of their views.

The study shows that:

- **The Common is a valued amenity accessible to the great majority of Southampton residents:**
 - It is appreciated and used (at least once a month) by residents who live within 3.58 km of The Common who mostly use it on a weekly basis.
 - It is readily accessible to the 162,000 city residents (63%, and 66,000 households) who live within 3.58km of its centre.
 - It is not the preserve of residents in its immediate vicinity.
- **Users of The Common reflect the ethnic diversity of the City's population:**
 - The users of The Common match the overall ethnic diversity of the City as measured in the 2011 census.
- **The Common is most popular with city residents from 30 to 69 years old:**
 - 30 to 39 year olds are the largest user group, often comprising young families with children.

- **The Common is highly valued as an open, natural green space primarily for walking and recreation:** It is appreciated as a natural green space in the heart of the City, which is used for a wide variety of activities important to physical and mental well-being: Predominantly walking (73%), but also jogging or running, nature appreciation, playing with children, sitting, lying, sunbathing relaxing, cycling, visiting the Hawthorns Wildlife Centre, dog walking and barbecuing which are undertaken by over 20% of users.
- **The Common significantly supports green travel in the City:**
 - The second most popular activity (after walking) is commuting by foot or bike.
- **The top priorities for improvements wanted by users are:**
 - Children's play facilities (see below)
 - Provision of public toilets
 - Litter and waste management
 - Street lighting and personal safety
 - Quality of the footpaths
- **Inadequate maintenance and resources:** The lack of maintenance and resources underpin the great majority of users' concerns above. It is also apparent in the poor condition and state of the three lakes and the Hawthorns Wildlife Centre, as well as the failure to effectively deal with anti-social behaviours (notably Cemetery Road as a venue for casual sex, drug taking and the homeless sleeping in the woods). These are a reflection of wider social issues in the City.
- **Management of a Semi-Natural Landscape for Recreation.** The special value of The Common as place for recreation lies in the natural character of its landscape. Users felt there is a need to more actively manage The Common to both enhance its biodiversity (e.g. with wildflower meadows and better habitat management) in some areas and open up wooded and overgrown areas for recreational uses.
- **Inadequate children's play Facilities.** The provision of sufficient well maintained, modern play areas (including water play) is a major issue. [The survey was done whilst work on the new play area was continuing, which will go some way to addressing this issue].
- **Conflicts between users:** The Common, by its nature, is a shared space. The survey indicates that there are conflicts between different user groups using the paths; walkers, dog walkers and cyclists in particular. A range of measures were suggested to address these conflicts, including better and more separated cycle paths, dog-free or dog-friendly zones, better information and enforcement.
- **Organised Events:** Users expressed strong concerns about organised events being held on The Common. In particular, the noise and disruption caused can be caused by their presence and their inadequate management which has left The Common damaged. However, a significant proportion of respondents had attended such an organised event. Opinion was broadly divided as to whether the number of events should be reduced or increased. Community events (such as the previous balloon/flower festivals) were favoured over commercial events.
- **Improved Eating & Drinking Facilities.** A desire to improve the quality and availability of the café facilities as well as to provide picnic benches and water fountains. Barbecuing is against

the byelaws, but is a popular activity, with a view that public barbecue facilities should be provided, which along with improved litter and waste management would address strong concerns about this activity.

- **Attracting more City residents to The Common:** Respondents who either never visited The Common or did so less once a year identified easing the barriers to travel (e.g. improving bus services and parking) and providing more attractive better facilities, especially toilets and café facilities as well as more organised events as key.

APPENDIX A: SURVEY QUESTIONS

About You

1. Please give the postcode of your residence
2. What is your age?
3. Which best describes your access to outside space at your accommodation?
 - Garden
 - Shared communal outside space
 - A usable balcony
 - No access to outside space
4. How often do you visit/use The Common (in any capacity)?
 - Frequently (at least once a day)
 - Regularly (at least once a week)
 - Occasionally (at least once a month)
 - Rarely (at least once a year)
 - Very Rarely (less than once a year)
 - Never

Your opinions about The Common

(Questions 5, 6, & 7 were answered by those who answered question 4 as Frequently, Regularly, Occasionally or Rarely.)

5. What do you like about The Common?
6. What do you dislike about The Common?
7. Please list up to three improvements to The Common, in order of importance that you would like to see implemented.
 - Most important:
 - Second-most important:
 - Third-most important:

(Questions 8 & 9 were answered by those who answered question 4 as Very Rarely or Never.)

8. Why do you use The Common infrequently or not at all?
9. Please list up to three improvements, in order of importance that would enable you to use The Common more frequently.
 - Most important:
 - Second-most important:
 - Third-most important:

10. You now have a choice: (Check one of the boxes below and then * click on continue)
 If you have time we would appreciate your answers to three more multiple choice questions about your use of The Common. This should take you less than five minutes.
 I wish to exit the survey now.

How do you use The Common?

11. What do you mainly use The Common for? (Tick all those that apply.)
 - Walking
 - Cycling
 - Playing with children
 - Visit the Hawthorns Wildlife Centre
 - Commuting route - walking
 - Commuting route -cycling
 - Model boating, flying model aircraft, drones or kites

- Animal feeding (ducks, swans, birds)
- Dog walking
- Barbecues, picnics or parties.
- Ball games
- Jogging or running
- Skating or scootering
- Blackberry picking
- Sitting, lying, sunbathing, relaxing
- Bird watching
- Nature appreciation - other than bird watching
- Fishing
- Other (please specify)

12. Which organised events have you attended? (Tick all those that apply.)

- Organised keep fit/sporting events, e.g. Park Run, Sky Ride etc.
- University of Southampton sports club event
- Funfair
- Music festivals
- Nature or history appreciation events
- Other (please specify)

13. Which of the facilities do you usually make use of when you visit? (Tick all those that apply.)

- Tarmac paths
- Gravel paths
- Seats
- Hawthorns Cafe
- Hawthorns Urban Wildlife Centre (other than cafe)
- Cowherds public house
- Children's play area behind the Cowherds public house
- Fitness area
- Ice cream van
- Open grassland
- Woodland
- Boating Lake
- Duck pond/Ornamental Lake
- Fishing lake
- Graffiti area in the tunnel under the Avenue

14. If you would like to stay in touch with Southampton Common Forum to help improve and shape the future of The Common please enter your email address below and we will be in contact shortly.

APPENDIX B: ORGANISATIONS WHO PROMOTED THE SURVEY

SCF are very grateful to the following organisations and people who have helped make the survey a success.

Boulder Shack Climbing Gym, Southampton. Mr Tim Miller, Founder & Head Coach
British Military Fitness.
Business South.
Chinese Association of Southampton. My Andy Lai, Vice President.
Common People.
Cycle Southampton Face Book page.
Destination Southampton. Ms Shirley Pinn, Events Director.
EU Welcome.Mr Dave Adcock, Project Manager.
Free Southampton Face Book page.
Go Southampton! Heidi Isa, Marketing & Events Director.
Hampshire Chamber of Commerce.
Hantsnet.
Hawthorns Café, The Common. N & M Catering.
Itchen Spitfires Running Club, Face Book page .
Kings Edward VI School, Southampton Geography Society. Mr George Vincent.
Lordshill Roadrunners.
Make and Brew Café, St James' Road, Southampton.
Ms Tanya Bellows.
Nextdoor Face Book page.
ParkLives, Face Book page.
Richard Taunton Sixth Form College, Ms Alice Wrighton, Principal.
Singh Sabha Gurdwara, Mr Saranjit Singh Karir, Registrar.
Solent University Students' Union. Ms. Hanna Head, Vice President Welfare.
Southampton City Council;. Mr Mitch Sanders, Mr Nick Yeats, Councillor Satvir Kaur.
Southampton Climbing Club.
Southampton Heritage Photos Face Book page.
Southampton Hoteliers Association.
Southampton Medina Mosque Trust Ltd., Southampton. Mr Toqeer Kataria, Vice Secretary.
Southampton Noticeboard Face Book page.
Southampton Parkrun.
Southampton Philharmonic Society, Ms Deborah Mitchel, Secretary.
The Green Party.
The Southampton Guide Face Book page.
Totton Face Book page.
Unity 101 Community Radio. Ram Kalyan Kelly, Project & Station Manager.
University of Southampton. Professor Sir Christopher Snowden, President; Mr Ian Dunn, Chief Operating Officer; Mr Jon Walsh, Public Affairs Officer.
University Southampton Students' Union. Mr Dan Varley Vice President Engagement.
What's going on around Southampton Face Book page.
Winchester Road shops.

APPENDIX C: QUESTION RESPONSE RATES

Question	Answered	Skipped
Q1. Please give the postcode of your residence.	2191	0
Q2. What is your age?	2180	11
Q3. Which best describes your access to outside space at your accommodation?	2158	33
Q4. How often do you visit/use the Common (in any capacity)?	2191	0
Q5. What do you like about the Common?	1766	425
Q6. What do you dislike about the Common?	1632	559
Q7. Please list up to three improvements to The Common, in order of importance, that you would like to see implemented.	1582	609
Q8. Why do you use The Common infrequently or not at all?	53	2138
Q9. Please list up to three improvements, in order of importance, that would enable you to use the Common more frequently.	47	2138
Q10. You now have a choice: (Check one of the boxes below and then click on continue)	1860	331
Q11. What do you mainly use the Common for? (Tick all those that apply.)	1733	458
Q12. Which organised events have you attended? (Tick all those that apply.)	1275	916
Q13. Which of the facilities do you usually make use of when you visit? (Tick all those that apply.)	1720	471
Q14. If you would like to stay in touch with Southampton Common Forum to help improve and shape the future of The Common please enter your email address below and we will be in contact shortly.	642	1549

APPENDIX D: TABULATION BY AGE

In these tables the percentages are defined with respect to each age cohort.

Activities:

Activity	Age							
	Less than 18	18 to 21	22 to 29	30 to 39	40 to 49	50 to 59	60 to 69	70 or older
Walking	45.1%	37.3%	50.9%	53.4%	56.0%	64.1%	72.1%	72.0%
Jogging or running	25.5%	37.3%	39.6%	38.3%	36.8%	22.8%	14.4%	8.3%
Nature appreciation - not bird watching	11.8%	16.4%	21.7%	20.0%	25.8%	31.9%	43.5%	42.0%
Playing with children	45.1%	3.0%	9.1%	33.7%	41.4%	19.7%	26.2%	16.6%
Sitting, lying, sunbathing, relaxing	5.9%	36.6%	38.3%	28.9%	23.2%	16.6%	18.8%	13.4%
Visit Hawthorns Wildlife Centre	11.8%	6.0%	11.7%	19.4%	31.1%	20.6%	35.3%	28.7%
Cycling	39.2%	17.2%	16.1%	26.0%	28.5%	22.5%	23.8%	12.1%
Barbecues, picnics & parties	9.8%	44.0%	33.5%	25.1%	15.6%	9.7%	7.4%	3.2%
Commuting route - walking	9.8%	22.4%	20.0%	19.7%	18.2%	17.2%	20.3%	14.6%
Dog walking	15.7%	6.7%	12.6%	12.6%	18.5%	25.6%	18.5%	14.0%
Commuting route - cycling	7.8%	17.9%	13.9%	15.4%	15.9%	20.6%	11.5%	5.1%
Ball games	21.6%	24.6%	12.2%	15.4%	16.9%	10.6%	7.1%	4.5%
Animal feeding (ducks, swans, birds)	5.9%	4.5%	8.3%	13.1%	13.9%	9.4%	17.1%	7.0%
Birdwatching	2.0%	3.7%	7.4%	6.0%	8.6%	13.1%	26.2%	25.5%
Blackberry picking	3.9%	1.5%	3.5%	4.3%	7.0%	9.7%	12.4%	13.4%
Skating & scootering	7.6%	4.5%	2.2%	5.4%	9.3%	0.3%	0.6%	0.0%
Model boating, etc	5.9%	1.5%	1.3%	1.4%	3.0%	1.9%	1.5%	0.6%
Fishing	0.3%	0.0%	0.7%	0.0%	2.2%	1.1%	1.3%	0.3%

Organised Events:

Activity	Age							
	Less than 18	18 to 21	22 to 29	30 to 39	40 to 49	50 to 59	60 to 69	70 or older
Organised keep fit/sporting events	19.6%	21.6%	31.7%	38.3%	43.4%	30.9%	20.0%	13.4%
Funfair	45.1%	13.4%	17.8%	25.1%	30.8%	27.2%	25.3%	24.2%
Music festivals	23.5%	14.2%	23.5%	26.3%	38.4%	25.9%	17.4%	5.1%
Nature or history appreciation events	7.8%	2.2%	8.7%	8.0%	12.3%	16.6%	22.9%	25.5%
UoS sports club	0.0%	25.4%	7.4%	2.3%	1.7%	0.3%	0.9%	0.0%

Facilities:

Facility	Age							
	Less than 18	18 to 21	22 to 29	30 to 39	40 to 49	50 to 59	60 to 69	70 or older
Tarmac paths	47.1%	43.3%	50.4%	59.1%	65.2%	65.9%	65.0%	63.1%
Open grassland	37.3%	49.3%	60.0%	56.6%	62.6%	62.5%	63.2%	52.2%
Gravel paths	17.6%	36.6%	35.7%	38.0%	47.0%	46.9%	54.7%	45.2%
Woodland	35.3%	30.6%	37.0%	35.7%	42.1%	45.9%	51.8%	40.8%
Duckpond/ornamental lake	29.4%	23.9%	21.3%	26.3%	28.8%	33.8%	40.6%	33.8%
Cowherds public house	9.8%	23.1%	32.6%	34.9%	31.5%	33.1%	26.5%	27.4%
Seats	13.7%	15.7%	22.6%	26.9%	31.5%	32.5%	41.5%	35.7%
Hawthorns Café	21.6%	6.7%	13.5%	22.9%	35.4%	30.0%	38.8%	32.5%
Chidrens play area	39.2%	4.5%	6.1%	28.9%	36.4%	16.9%	21.8%	15.9%
Ice cream van	31.4%	9.7%	11.7%	20.6%	24.8%	14.4%	12.9%	10.8%
Fishing lake	9.8%	6.0%	5.2%	6.6%	9.9%	11.9%	11.5%	12.1%
Boating lake	5.9%	7.5%	10.9%	6.3%	11.3%	8.1%	12.4%	8.9%
Graffiti area	7.8%	13.4%	7.8%	7.1%	8.9%	9.4%	9.7%	5.1%
Fitness area	15.7%	6.7%	6.5%	7.4%	9.9%	5.0%	4.4%	1.3%

Main issues:

Issues	Age							
	Less than 18	18 to 21	22 to 29	30 to 39	40 to 49	50 to 59	60 to 69	70 or older
More toilets	13.5%	5.2%	11.4%	14.9%	16.5%	10.4%	14.1%	9.1%
Litter	3.8%	12.7%	20.0%	14.3%	18.2%	21.9%	16.5%	15.9%
Improve play area	13.5%	3.7%	3.5%	19.8%	20.4%	7.9%	11.0%	7.3%
Better lighting	3.8%	11.2%	13.3%	14.0%	15.7%	11.5%	5.8%	2.4%
Improve footpaths	1.9%	9.7%	9.4%	8.0%	8.0%	6.0%	8.4%	14.6%
Cyclist/walker separation	3.8%	3.0%	4.3%	2.2%	7.7%	7.7%	11.3%	13.4%
Better maintenance	0.0%	3.0%	4.3%	4.9%	5.8%	9.0%	11.3%	17.7%
Safety measures	1.9%	3.0%	6.3%	6.9%	6.1%	5.7%	6.8%	4.9%