



OPEN MEETING

Southampton Common Forum

13th December 2017

Southampton Solent University



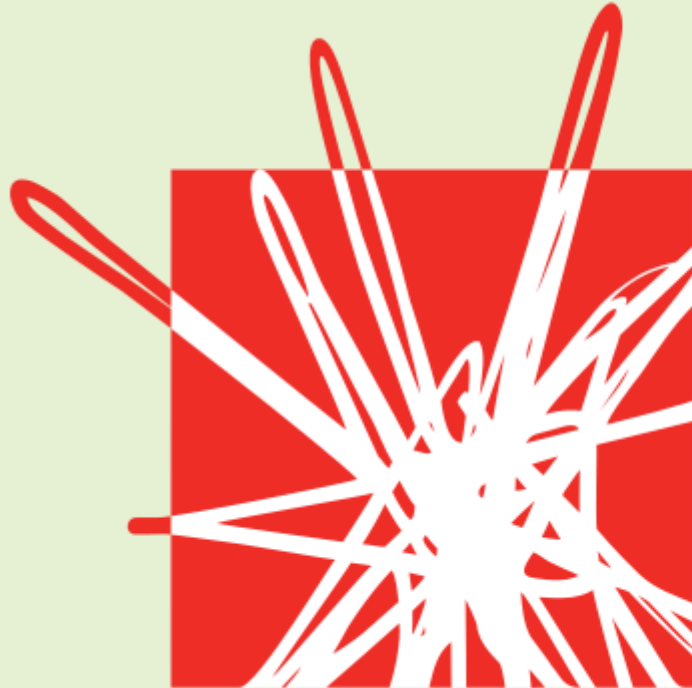


1. Welcome & Agenda

- Welcome: Prof. Graham Baldwin, V.C. Southampton Solent University
- Minutes & Matters Arising from Open Meeting 4th July 2017
- Southampton Common Video - The First Cut
- Survey Report (Adam Wheeler) & Discussion
- The 2018 Plan: Adam Wheeler & Councillor Satvir Kaur & Discussion
- Looking forward to 2018



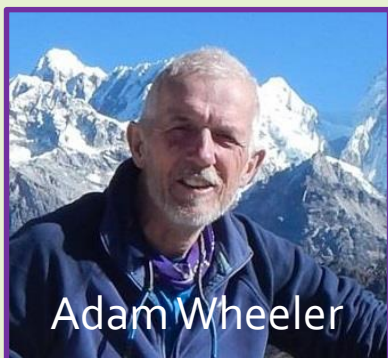
Prof. Graham Baldwin,
Vice Chancellor,
Southampton Solent University



Southampton
SOLENT
University



SCF Management Committee



Adam Wheeler



Dave Johnston



Malcolm White



Kate Martin



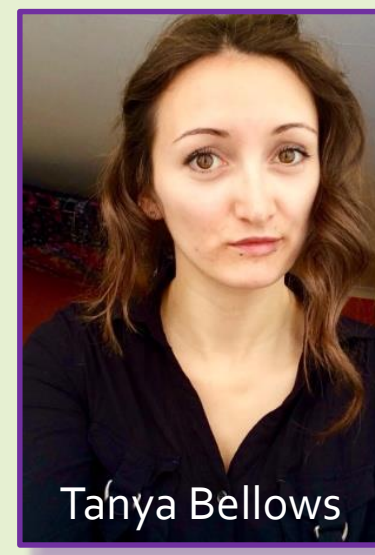
Andy Lai



Simon Hill



Shirley Pinn



Tanya Bellows



Roger Brown



2017 Survey Report

What over 2,100 people across
Southampton think about their
Common and its future





Thank-you

Boulder Shack Climbing Gym, Southampton. Mr Tim Miller, Founder & Head Coach

British Military Fitness
Hampshire Chamber of Commerce.

Burton Hamlyn
Ch Hartley
Ha Richard Taunton Sixth Form College, Ms Alice Wrighton, Principal.

Co Ha
Sing
Cyc Itcl Southampton Philharmonic Society, Ms Deborah Mitchel, Secretary.

De Kir Sole
The

EU Lo Sou
The

Fre Ma Sou
Tott

Go Ms Sou
Unit

Ne Sou
Univ

Pa Sou
Ope

Sou
Univ

Sou
Wha
Win

- **Nearly 900 friends on our mailing list**
- **Over 300 followers of our Face Book page**
- **And the 2,190 people from across the City and beyond who completed the survey**



A large & authoritative survey

How we went about it:

- Online survey from May to October 2017
- Strenuous efforts to reach out to all citizens across the City
- Promoted intensively on social media, Unity 101 & face to face meetings with local organisations

2,190 respondents across The City and beyond

- The largest survey of Common users ever! The first survey for 40 years.
- Accurate picture of adult (18+) users' views

The Survey provides a very authoritative and accurate picture of:

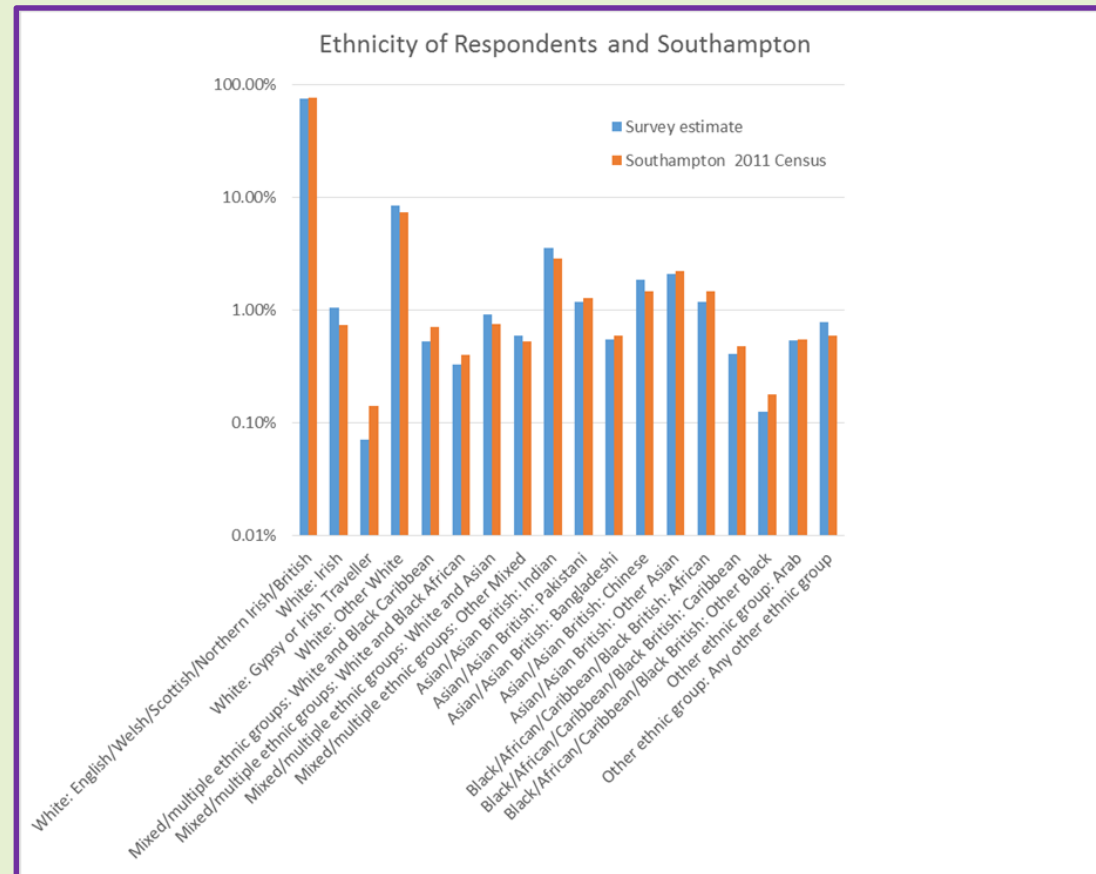
- Who uses The Common
- What they think about their Common & what they do on their Common

A free public resource available, along with anonymised raw data



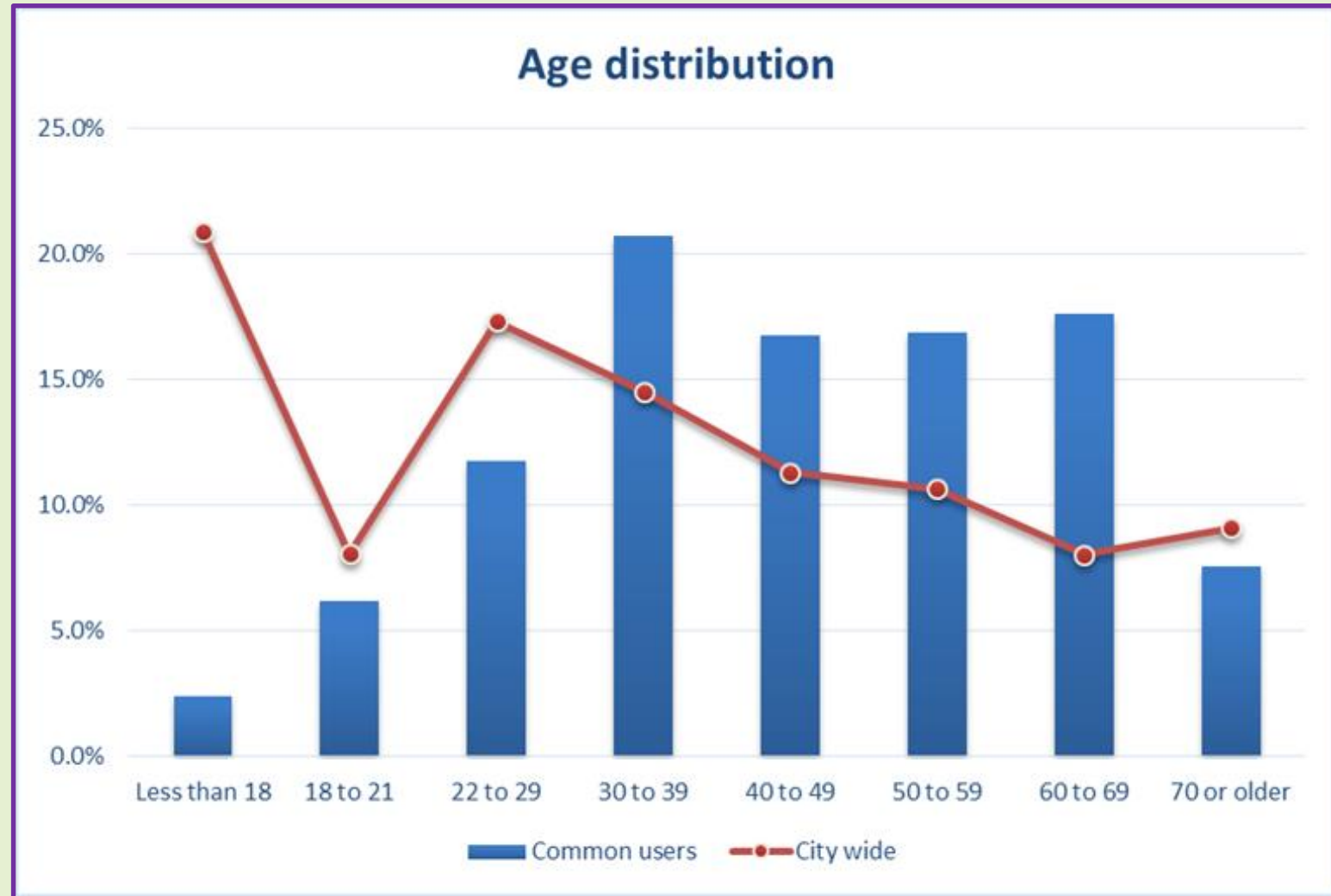
Who are Common users?

- Used 2011 Census data to understand demographics of Common users.
- Users have same ethnic make up as the City as a whole:





Their age



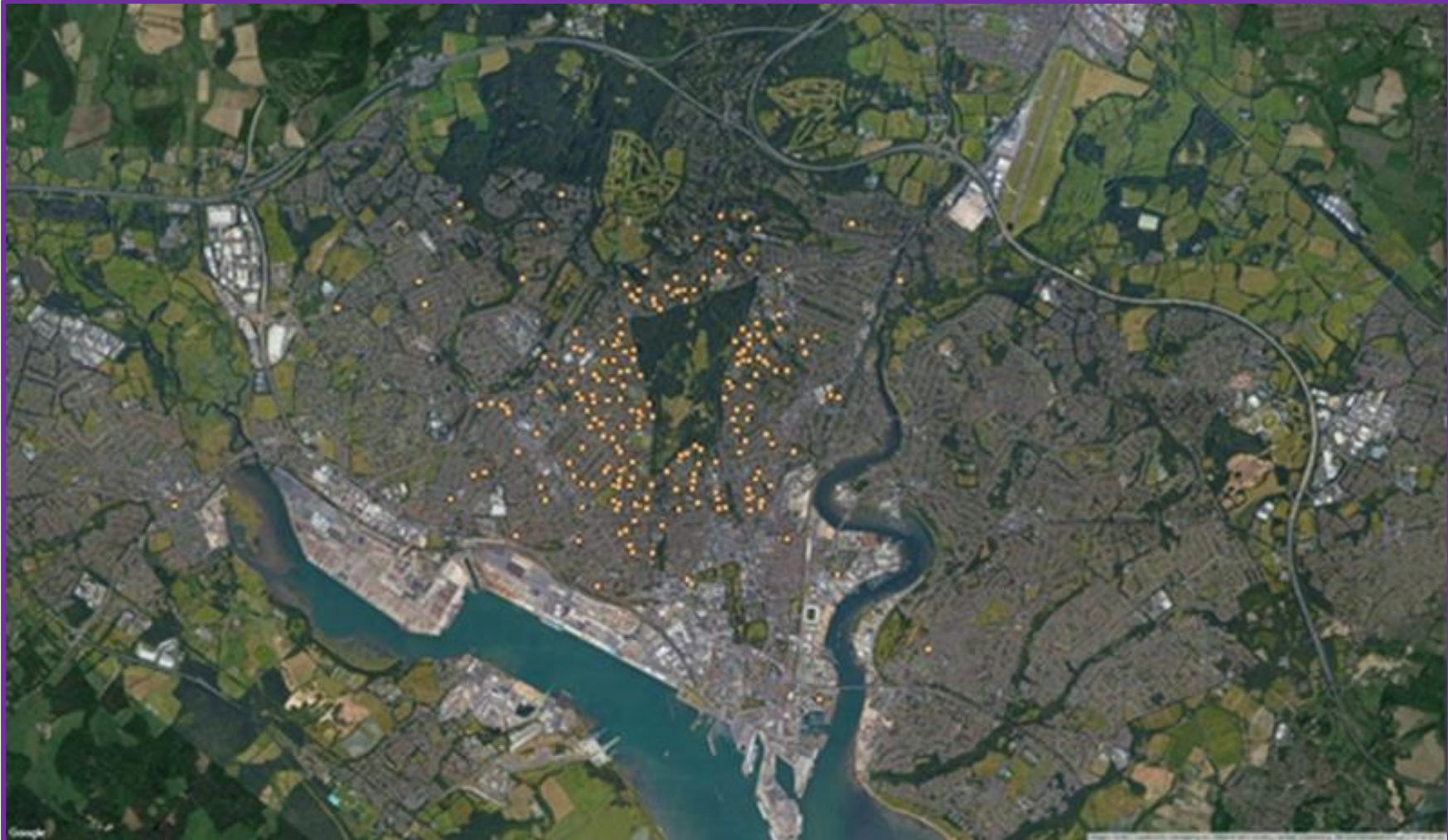


Where do they live?





Where do they live? (Daily Visits)





Where do they live? (Weekly Visits)





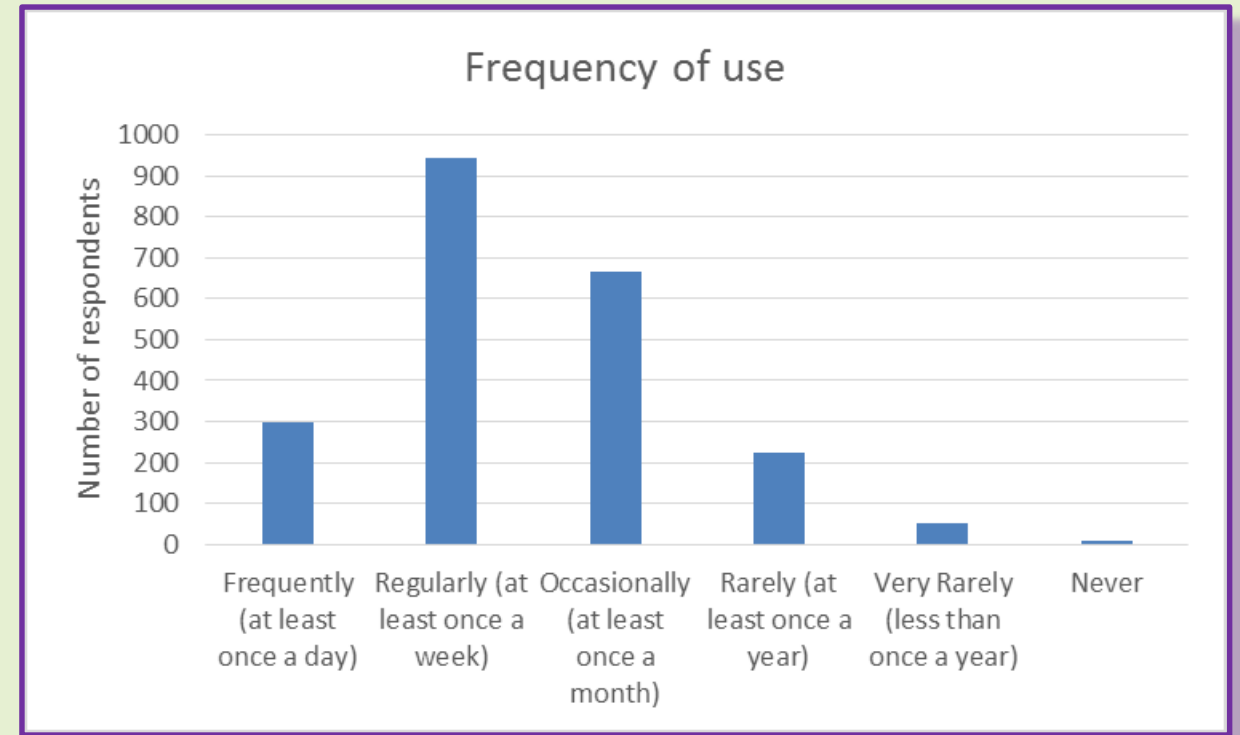
Where do they live? (Monthly Visits)





The Common is accessible to the majority of citizens

- The Common is not the preserve of the mainly white, middle class residents who live nearby
- Users come from every Council Ward
- 90% of users who visit at least monthly live up to 2.2 miles from The Common
- The Common is accessible to the 162,000 City residents (63%), at least on a monthly basis
- Most people visit weekly.





Users love their Common



“Green space, nature, away from city traffic, safe.”

“It is an absolute oasis and central to my sense of wellbeing”

“The trees, the open land ,the use of it by multicultural Southampton ,the area of wild flowers ,The Hawthorns , blackberries, Every season! Thank you.”



Their top priorities:

- Better child play facilities
- More and better toilets
- Litter & waste management
- Street lighting & personal safety
- Quality of footpaths

“Upgrade to play facilities to attract families”

“Toilets facilities, especially at northern end and when Hawthorn Centre cafe is shut”

“Management of litter - signs, larger bins, regular sweeps”

“Better lighting for the darker months of the year”

“Please repair potholes, cycling is very bumpy”



Inadequate Maintenance & Resources

“The staff who maintain the common are fantastic, but more are needed”

“Cleaning of the boating pond, so that it can be used for sailboat models”

“Tidy up the duck pond and do something about the rats.”

“The Wildlife Centre was great - I'd like to see that restored.”

“Undergrowth management i.e. cut it back to restore the common to its original area.”

“Better conservation management of natural habitats”

“Reduction in illegal activities, particularly along Cemetery road”



And also

- Conflicts between users, notably, pedestrians, cyclists and dog walkers.
- The nature and management of organised events.
- Improved eating and drinking facilities.

“Dogs often out of control. My friend was knocked over by some earlier this year and got a bad concussion.”

“Fast cyclists are frightening.”

“I dislike that when events are held e.g. common people, the main field is left in an absolutely horrendous state...”

“More picnic tables or eating places”

“Better quality and better situated café”

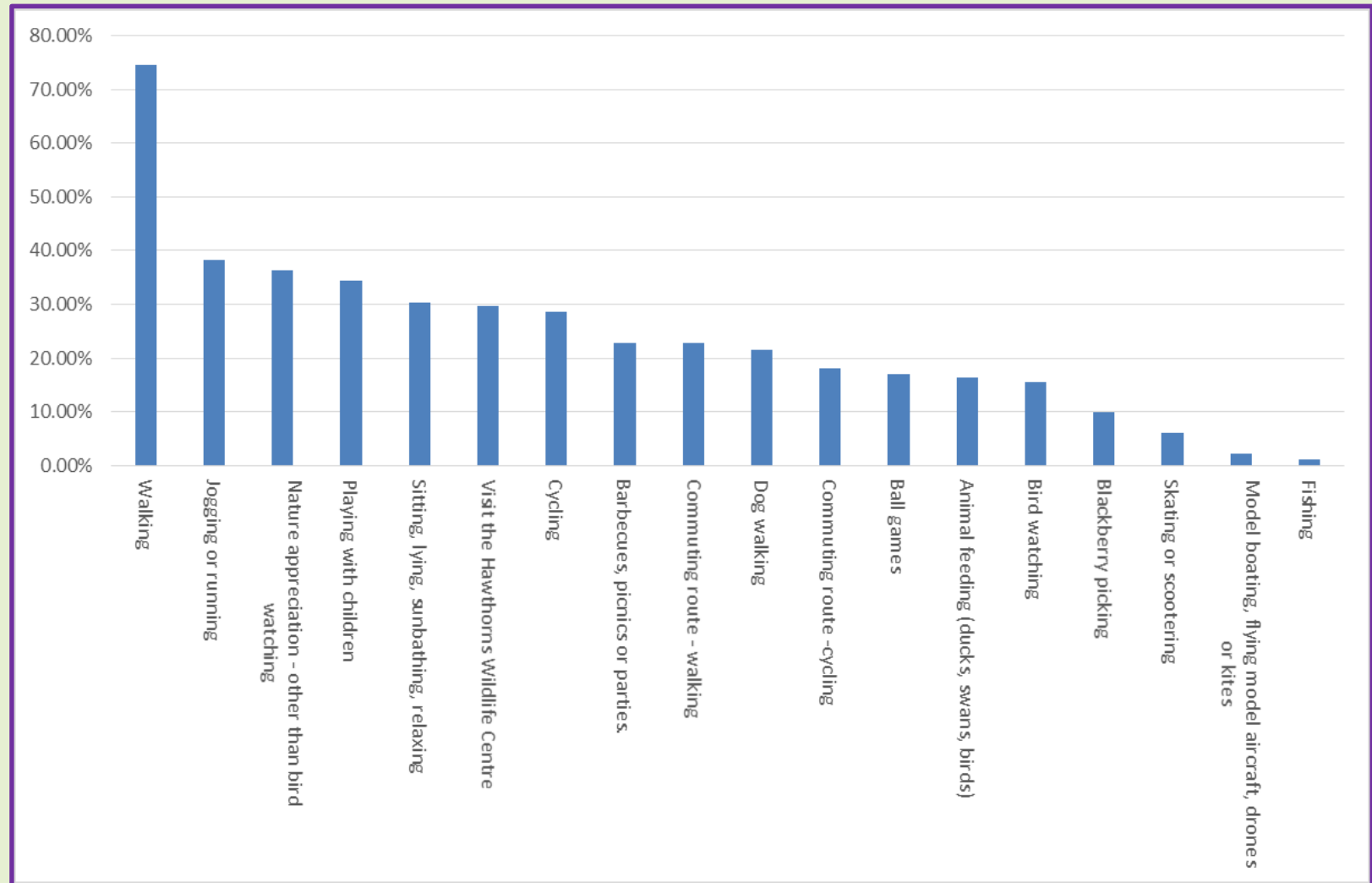
“Public BBQ's would fabulous and more seating - perhaps picnic style - so families can enjoy a meal together in The Common.”

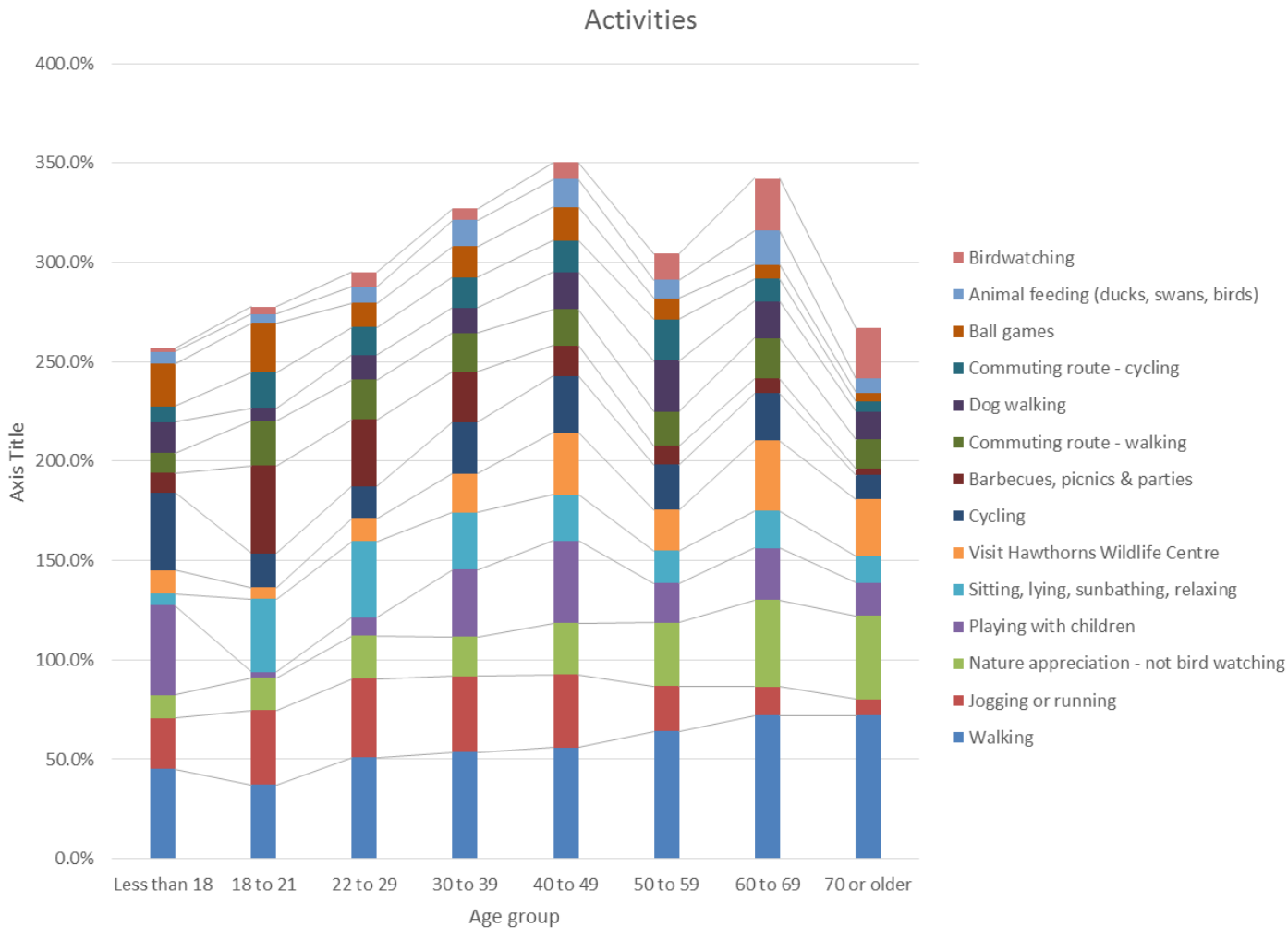
“People using disposable bbq's and ruining the grass.”



Top 5 Activities:

1. Walking
2. Commuting (foot & cycle)
3. Jogging/running
4. Playing with children
5. Sitting, lying,...







Our view

- **Southampton peoples' Common:**
 - The amenity impact of The Common is far reaching across the City - not just the preserve of white middle class residents in its vicinity - but a wide cross section of residents from across the City
 - Residents are passionate about their Common
 - Used mainly for recreational purposes & green commuting
 - Contributes to better and healthier living in the City
- **Improvements are needed:**
 - Hygiene factors: personal safety, toilets, litter, footpaths, maintenance
 - Improve management to:
 - Reduce conflicts between pedestrians, cyclists, dog walkers
 - Better maintain Hawthorns, lakes, play area
 - Investment: lighting, Hawthorns, signage & information, toilets, refreshment facilities



The Way Forward

A bold and aspirational plan:

- To make it the most attractive, and best used urban space in the UK, for the benefit for all the City's residents.
- Identify additional resources that can supplement community effort to make The Common, once again, a jewel in Southampton's crown.
- Operated in a more transparent way that takes better account of residents and community groups.
- New plan that engages residents, community groups, private companies, public organisations and third sector bodies.

The Survey provides an excellent starting point.



2018 Plan

- Develop a first draft strategic plan
 - In partnership with City Council up to Easter
 - Wide consultation of draft strategic plan
 - Address resourcing and business model.
-
- **How, who, when should we consult & engage?**

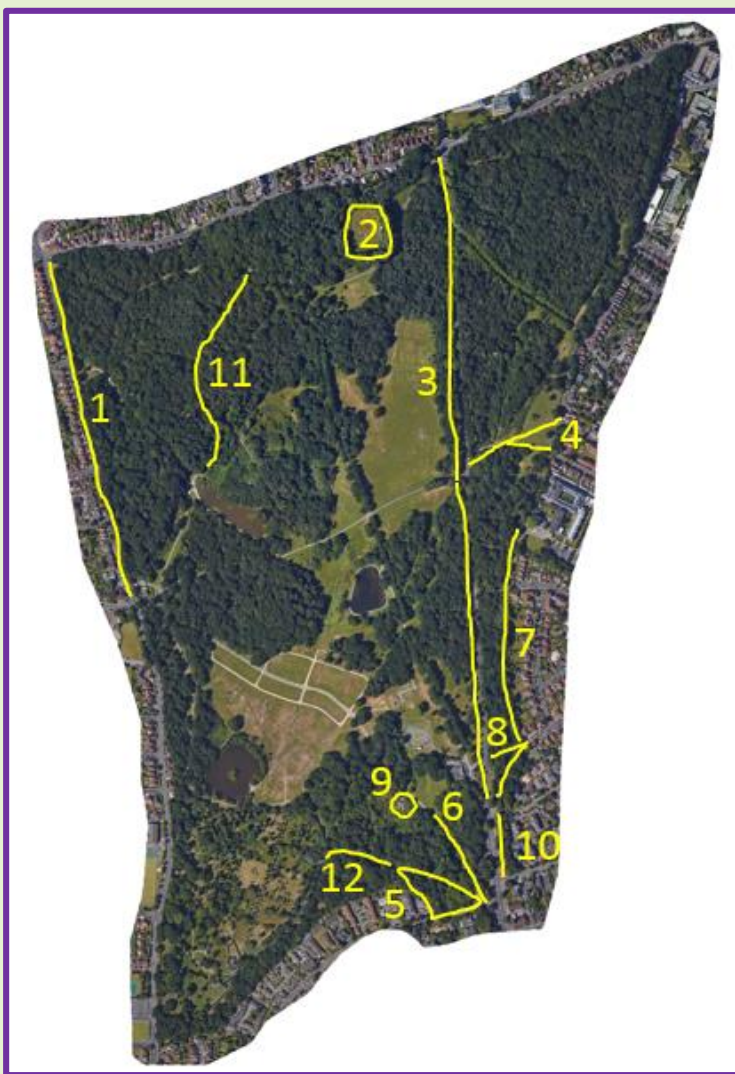


2018 Activities

- **Develop strategic plan with City Council & consult widely (volunteers!)**
- **Establish & manage a volunteer groundworks programme on The Common:**
 - Community Chest grant pending for equipment, insurance etc.
- **Promote & publicise volunteer opportunities with sympathetic organisations**
 - Surveys of natural flora and fauna
 - Support educational activities at The Hawthorns
- **Advocacy for The Common: a better future**
 - Develop a promotional video in partnership with Southampton Solent University students - professional drone pilot arranged
 - Further build social media profile & presence
 - Continue to build positive relations with Common users, local businesses etc.
- **Monthly Photo competition**



2018 Activities





Close

Thank you

Donations!